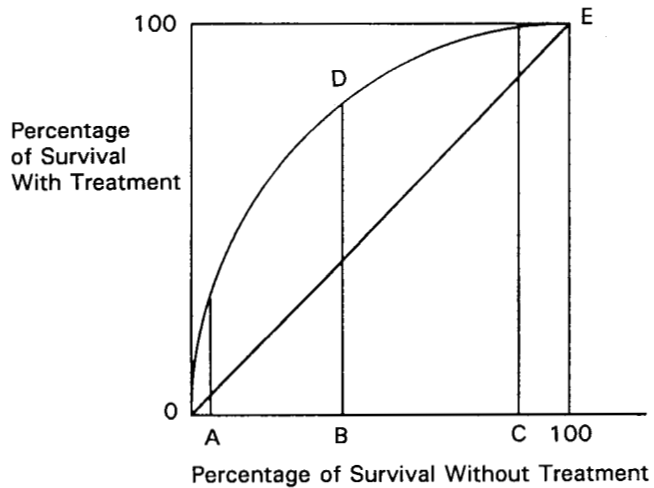


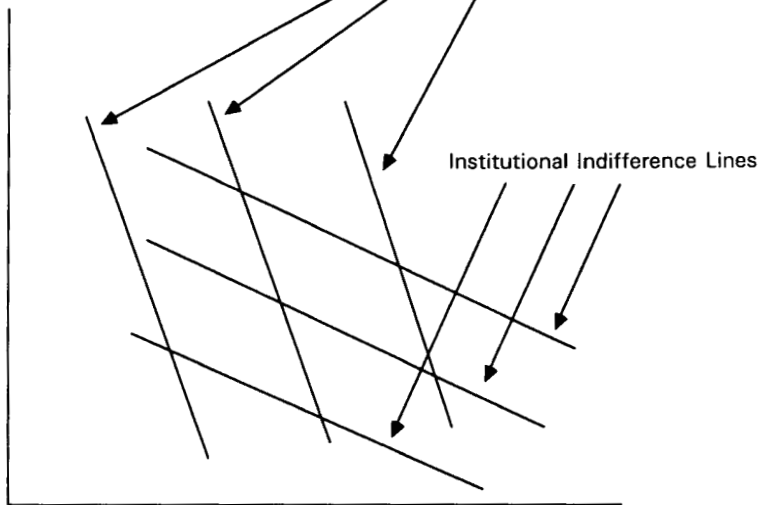
Figure 3.1



**Figure 3.2**

Aggregate Measure of Disadvantage  
(based on family income  
and parental level of education)

Iso-performance Lines



Aggregate Measure of Academic Achievements  
(based on high school grade and rank, test scores, etc.)

Figure 3.3

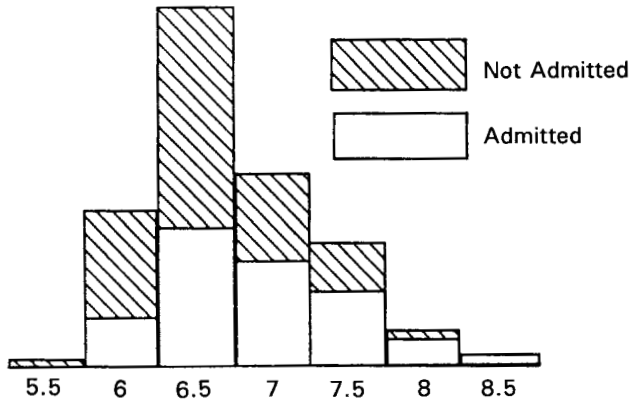


Figure 3.4.<sup>106</sup>

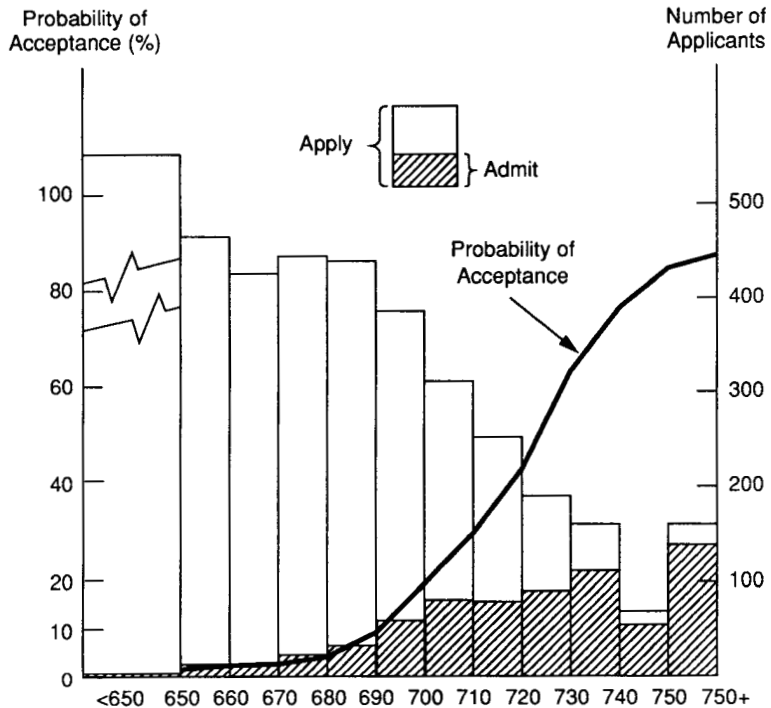


Figure 3.5<sup>107</sup>

**TABLE 3.1 /**

	Need Discretionary Assessment	Do not Need Discretionary Assessment
Depend on Actions Taken by the Individual	Need, desert, social usefulness, acquired skills	Weight, lifestyle-related illnesses, citizenship, marital status, religion, literacy, other status criteria, wealth
Do not Depend on Actions Taken by the Individual	Pain, inborn skills, intensity of preference	Age, gender, race, genetically based illnesses

**TABLE 3.2 /**

	Pre-allocative Level	Post-allocative Level	Increment
Goods	Public housing Medical goods (treat most critical cases first)	Medical goods (minimize mortality rates)	Education (value-added approach) Medical goods (treat those who benefit most)
Burdens	?	Job loss Loss of child custody (needs-based criterion)	Loss of custody (utilitarian criterion)

**TABLE 1. / Recommended Liability in China (c.a. A.D. 1020)**  
**[Klitgaard]**

If the Person Recommended Was Later Punished With:	The Recommender Could Be Punished With:
Death	Deportation
Deportation	Forced labor
Forced labor	Beating with a heavy or light rod
Beating with a heavy rod	None
Beating with a light rod	None



**TABLE 6.1 /**

	Men		Women	
	I	II	I	II
(A)	10	8	6	4
(B)	9	5	10	4
(C)	8	6	8	6

**TABLE 6.2 /**

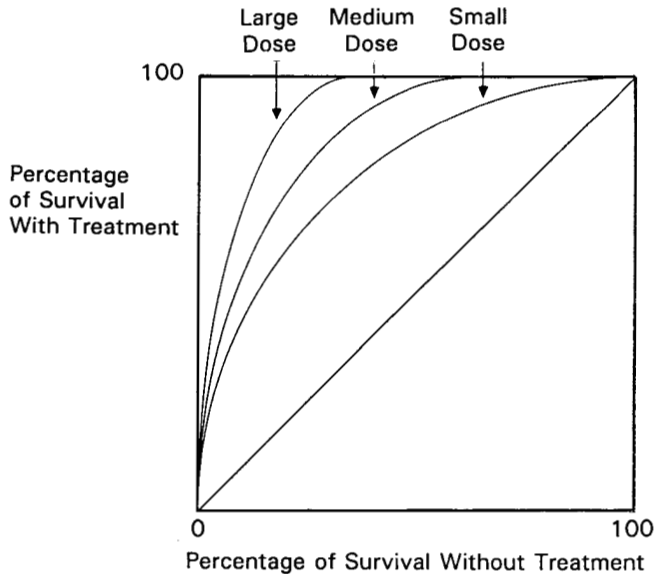
	Whites	Blacks
Actual Distribution	10	8
Past Distribution	9	4
Counterfactual Past Distribution	7	7
Counterfactual Present Distribution	10	10
Proposal A	9	9
Proposal B	8	10
Proposal C	5	13
Proposal D	6	12

**TABLE 6.3 /**

---

	Businessmen	Workers	Professionals
Golf Course	1	2	3
Orchestra	2	3	1
Swimming Pool	3	1	2

---



**FIGURE 7.1**