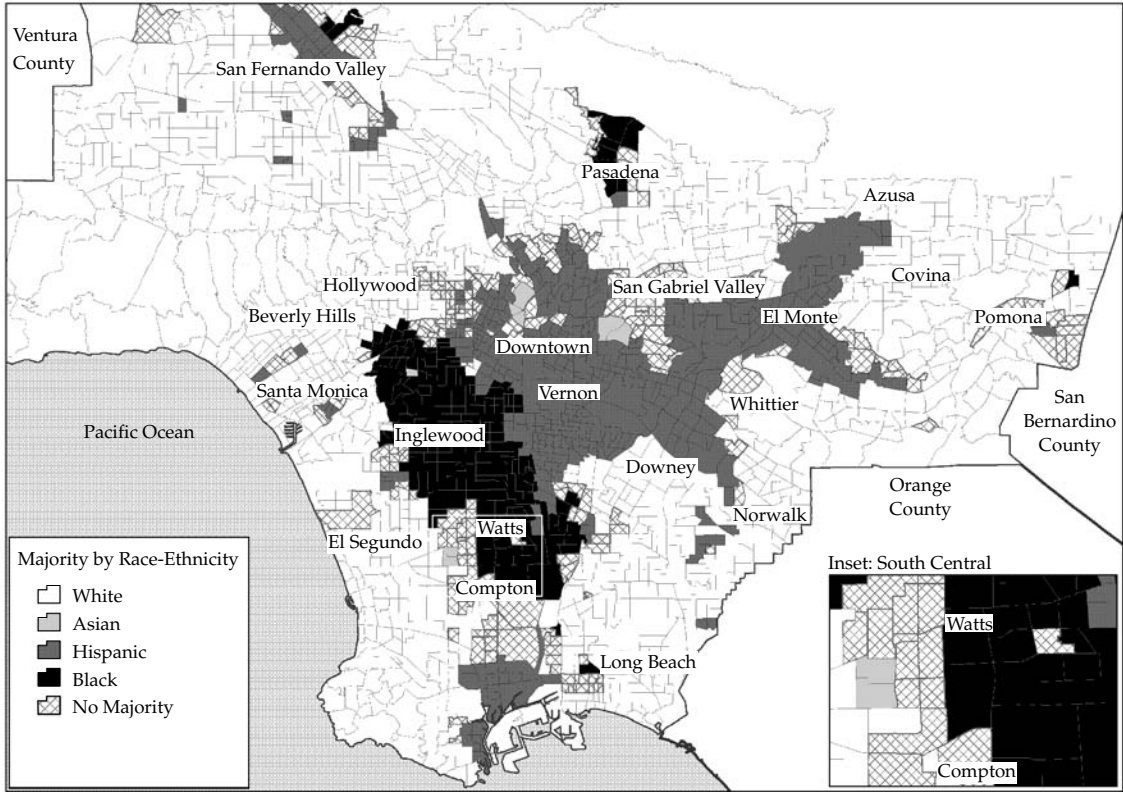
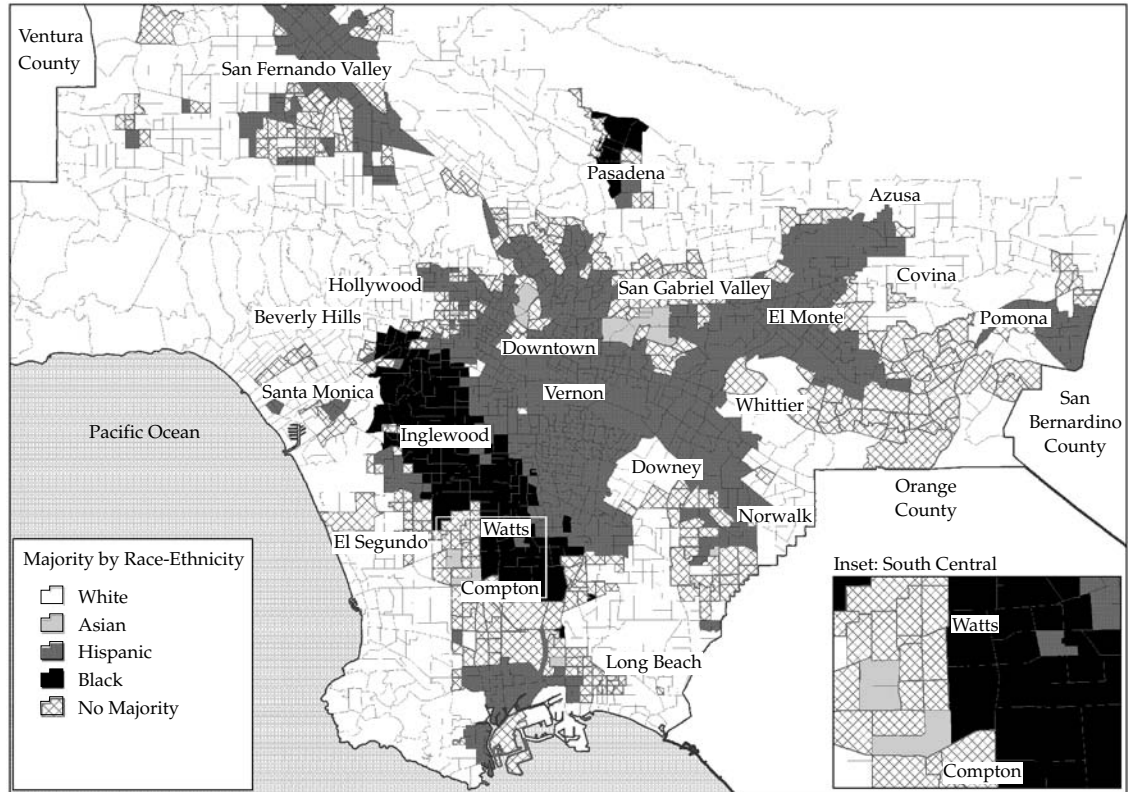


Figure 1.1 Los Angeles County: Racial-Ethnic Concentration, 1980



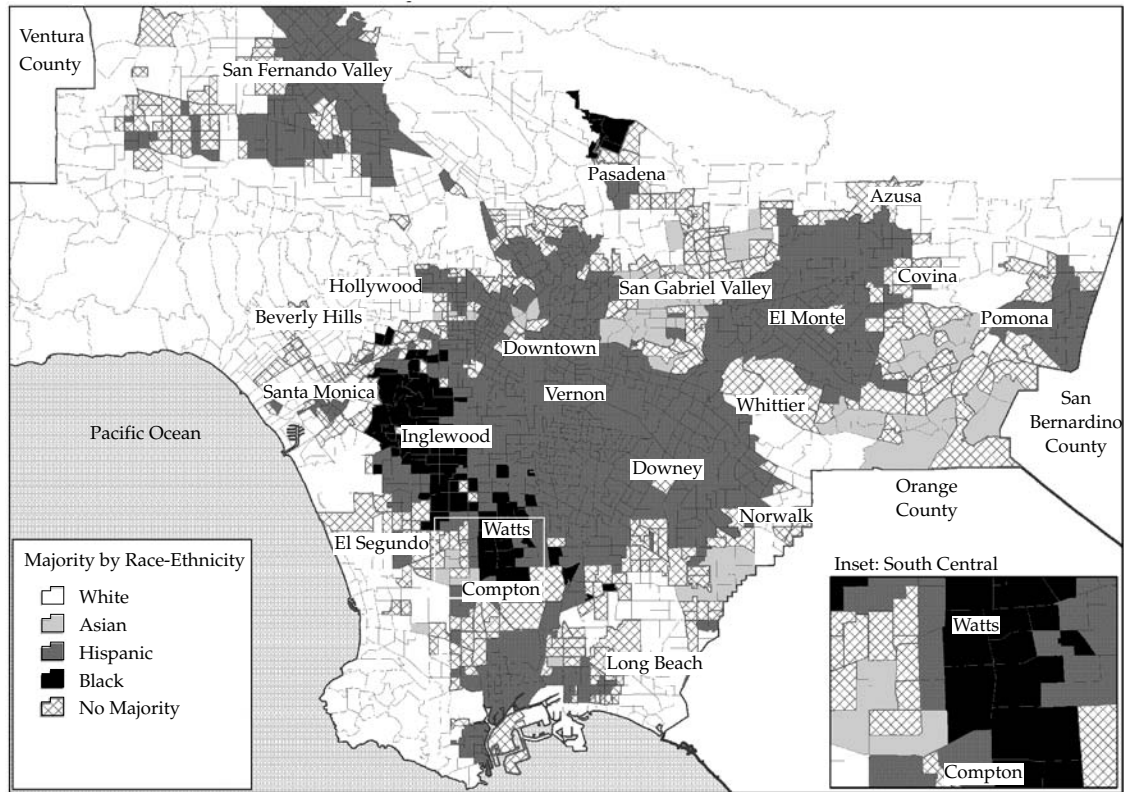
Source: GeoLytics (2003).

Figure 1.2 Los Angeles County: Racial-Ethnic Concentration, 1990



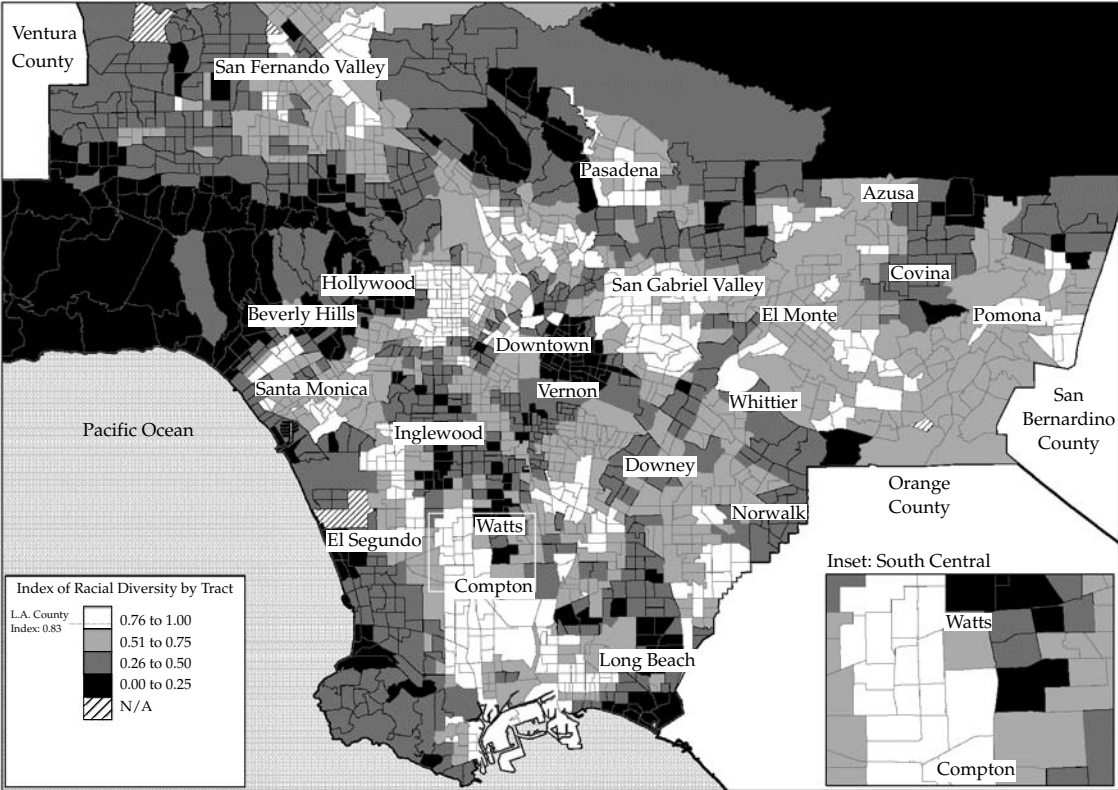
Source: GeoLytics (2003).

Figure 1.3 Los Angeles County: Racial-Ethnic Concentration, 2000



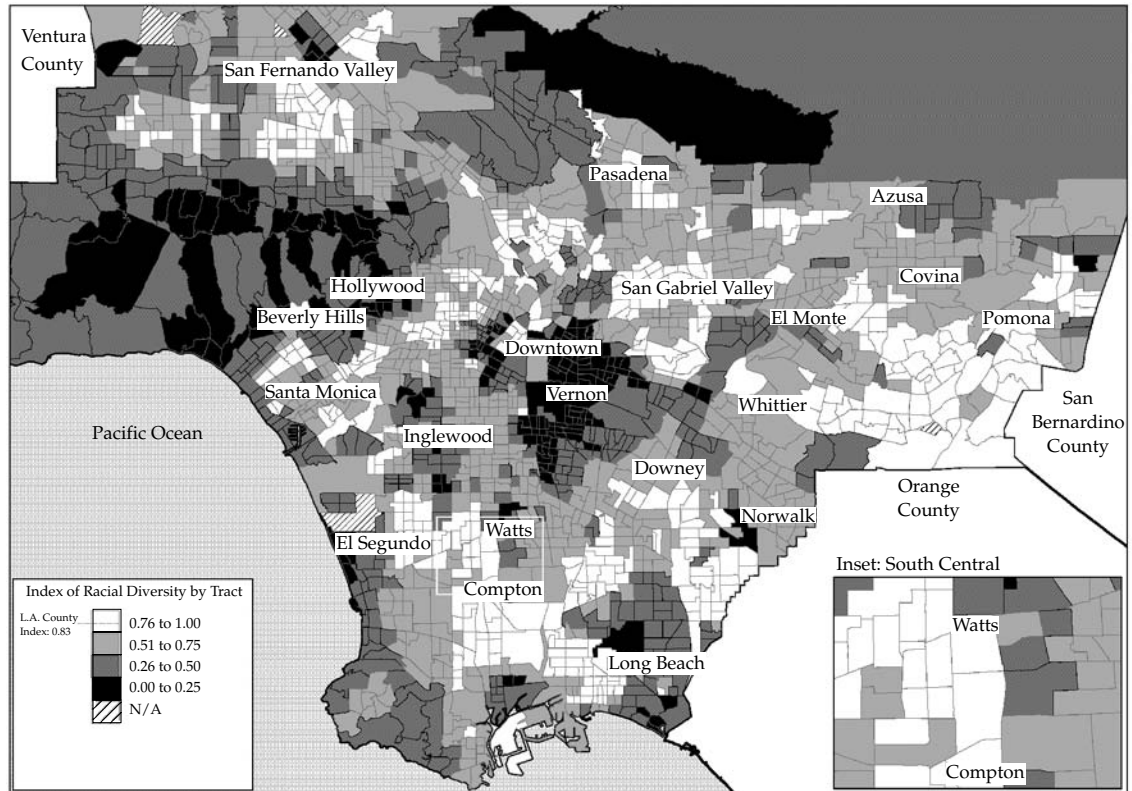
Source: GeoLytics (2003).

Figure 1.4 Los Angeles County: Index of Racial Diversity, 1980



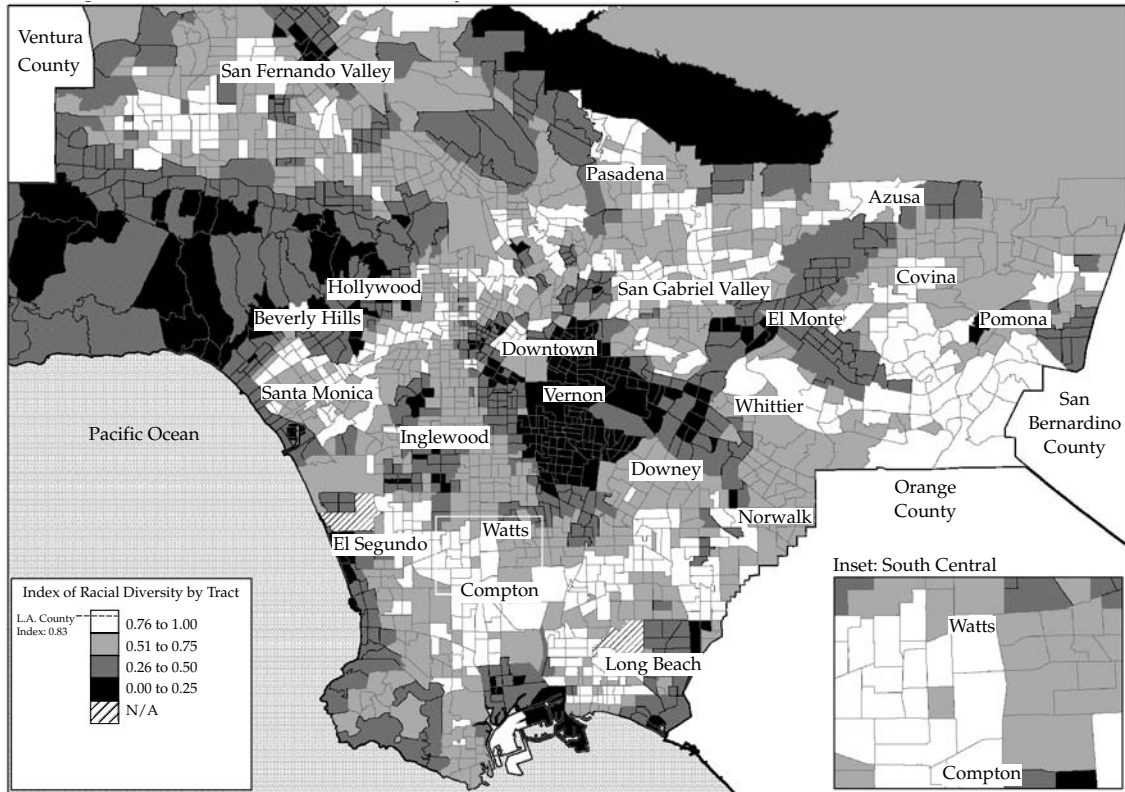
Source: GeoLytics (2003).

Figure 1.5 Los Angeles County: Index of Racial Diversity, 1990



Source: GeoLytics (2003).

Figure 1.6 Los Angeles County: Index of Racial Diversity, 2000



Source: GeoLytics (2003).

Table 1.1 Racial-Ethnic Composition of Los Angeles County, 1990–2000

Year	White		Black		Latino		Asian	
	Population	Percentage	Population	Percentage	Population	Percentage	Population	Percentage
1990	3,634,722	40.70%	990,406	11.17%	3,306,116	37.96%	928,710	10.48%
2000	2,959,614	31.09	930,957	9.78	4,242,213	44.56	1,137,500	11.95
Change from 1990 to 2000		-18.57		-6.00		+28.31		+22.48

Source: U.S. Bureau of the Census.

Table 1.2 Native-Born and Foreign-Born Population in Los Angeles City and Los Angeles County, 1980 to 2000

	1980			
	Native-Born	Foreign-Born	Percentage Foreign-Born	Total
Los Angeles City	2,162,032	804,818	27%	2,966,850
Los Angeles County	5,812,710	1,664,793	22	7,477,503



Table 1.2 (Continued)

1990				2000			
Native- Born	Foreign- Born	Percentage Foreign- Born	Total	Native- Born	Foreign- Born	Percentage Foreign- Born	Total
2,148,733	1,336,665	38%	3,485,398	2,182,114	1,512,720	41%	3,694,834
5,968,098	2,895,066	33	8,863,164	6,069,894	3,449,444	36	9,519,338

Source: U.S. Bureau of the Census: 1980, tables 172, 116; 1990, tables 167, 138, and 27; 2000, table P21.

Table 1.3 Foreign-Born Population by Place of Birth, Los Angeles City and Los Angeles County, 2000

Percentage	Los Angeles City		Los Angeles County	
	Population	Percentage	Population	Percentage
Latin America	996,996	65.9%	2,143,049	62.1%
Asia	376,767	24.9	1,022,289	29.6
Europe	100,252	6.6	194,503	5.6
Africa	20,730	1.4	43,024	1.2
North America (not Latin America)	13,859	0.9	34,003	1.0
Oceania	4,104	0.3	12,560	0.4
Born at Sea	12	0.0	16	0.0
Total	1,512,720		3,449,444	

Source: U.S. Bureau of the Census, 2000, table P21.

Table 1.4 Race and Poverty in Los Angeles County, 2000

---

	Poverty Rate
Racial-ethnic group	
Non-Hispanic white	8.5%
African American	24.4
Latino	24.2
Asian	13.9
Total	17.9

---

*Source:* United Way of Greater Los Angeles and Los Angeles Urban League (2005).

Table 1.5 Economic Indicators and Index of Economic Inequality in Los Angeles, 2005

	Whites	Blacks	Latinos	Asians
Key indicator				
Median household income in 2000	\$53,798	\$31,905	\$33,820	\$47,631
Median family income in 2000	69,396	37,190	33,363	54,108
Per capita income in 2000	35,785	17,341	11,100	20,595
Household income less than \$35,000	32%	53%	52%	38%
Household income greater than \$100,000	23	8	7	17
Unemployment rate	6	14	10	6
Adults in the labor force	64	59	59	59
Adults unemployed or not in labor force	40	49	47	44
Persons below poverty line	9	24	24	14
Own business	489,284	38,277	136,678	114,462
Own business with paid employees	127,345	3,359	16,757	37,596
Weighted economic index	1.00	.55	.54	.79

Source: United Way of Greater Los Angeles and Los Angeles Urban League (2005, 26).

Table 1.6 Black, Latino, and Asian Segregation from Whites in the Fifty Largest Metropolitan Regions, 1980 to 2000

Metropolitan Area	Blacks			Latinos			Asians		
	Dissimilarity	Isolation	Exposure	Dissimilarity	Isolation	Exposure	Dissimilarity	Isolation	Exposure
Western areas									
Los Angeles, Long Beach	68 (-14)	34 (-26)	16 (0)	63 (+6)	63 (+13)	17 (-17)	48 (+1)	29 (+14)	31 (-17)
Riverside, San Bernardino	46 (-9)	15 (-5)	38 (-17)	43 (+4)	50 (+17)	36 (-23)	38 (+7)	11 (+8)	46 (-27)
Orange County	37 (-9)	3 (-2)	48 (-17)	56 (+13)	54 (+21)	31 (-28)	40 (+12)	26 (+19)	46 (-29)
San Diego	54 (-10)	15 (-12)	38 (-6)	51 (+9)	44 (+16)	38 (-20)	47 (+1)	22 (+11)	45 (-17)
Seattle, Bellevue, Everett	50 (-18)	14 (-15)	59 (+4)	31 (+11)	8 (+6)	70 (-16)	35 (-5)	19 (+7)	65 (-8)
Oakland	63 (-11)	35 (-21)	26 (-2)	47 (+11)	30 (+12)	36 (-25)	42 (+4)	29 (+17)	41 (-22)
Portland, Vancouver	48 (-21)	16 (-16)	67 (+7)	35 (+14)	15 (+12)	74 (-17)	32 (+3)	9 (+6)	78 (-12)
San Francisco	61 (-7)	23 (-18)	31 (-3)	54 (+8)	34 (+12)	36 (-17)	49 (-2)	40 (+10)	38 (-12)
San Jose	41 (-8)	4 (-3)	38 (-18)	52 (+6)	41 (+9)	30 (-23)	42 (+9)	38 (+27)	37 (-28)
Sacramento	56 (-3)	18 (-4)	44 (-13)	40 (+5)	21 (+7)	52 (-17)	49 (+1)	20 (+7)	48 (-19)
Western area average	52 (-11)	18 (-12)	41 (-7)	47 (+9)	36 (+13)	42 (-20)	42 (+3)	24 (+13)	48 (-19)
Southwestern areas									
Houston	68 (-9)	47 (-19)	22 (-1)	56 (+5)	49 (+13)	31 (-19)	49 (+6)	15 (+9)	45 (-26)
Dallas	59 (-19)	42 (-26)	33 (+9)	54 (+5)	45 (+21)	37 (-23)	45 (+6)	11 (+9)	60 (-22)
Phoenix, Mesa	44 (-18)	9 (-14)	51 (+4)	53 (0)	46 (+12)	44 (-13)	28 (+1)	4 (+3)	70 (-13)
Denver	62 (-7)	24 (-19)	47 (+4)	50 (+1)	38 (+9)	50 (-13)	30 (+4)	5 (+3)	70 (-9)

Fort Worth,										
Arlington	60 (-18)	35 (-28)	40 (+10)	48 (0)	37 (+11)	46 (-17)	42 (+5)	8 (+6)	61 (-25)	
San Antonio	50 (-12)	20 (-15)	34 (+1)	51 (-7)	66 (-1)	27 (-2)	32 (+2)	4 (+2)	49 (-13)	
Las Vegas	43 (-20)	19 (-31)	48 (+7)	43 (+20)	34 (+23)	49 (-30)	30 (+9)	9 (+6)	62 (-20)	
Salt Lake City,										
Ogden	37 (-20)	3 (-6)	74 (-1)	43 (+8)	22 (+12)	70 (-15)	30 (+5)	6 (+4)	76 (-13)	
Austin, San										
Marcos	52 (-13)	21 (-22)	40 (+5)	47 (0)	40 (+4)	45 (-7)	41 (+6)	9 (+7)	63 (-13)	
Southwestern area										
average	53 (-15)	24 (-20)	43 (+4)	49 (+4)	42 (+12)	44 (-15)	36 (+5)	8 (+5)	62 (-17)	
Midwestern areas										
Chicago	81 (-8)	73 (-10)	16 (+5)	62 (-2)	48 (+10)	38 (-13)	44 (-3)	15 (+6)	63 (-12)	
Detroit	85 (-3)	79 (0)	17 (-2)	46 (+4)	19 (+12)	62 (-13)	46 (+5)	8 (+6)	76 (-8)	
Minneapolis, St.										
Paul	58 (-10)	23 (-6)	58 (-4)	47 (+10)	10 (+6)	67 (-20)	43 (+13)	12 (+10)	68 (-25)	
St. Louis	74 (-9)	65 (-9)	32 (+8)	29 (0)	4 (+2)	77 (-4)	43 (+1)	5 (+3)	80 (-8)	
Cleveland, Lorain,										
Elyria	77 (-8)	71 (-7)	25 (+5)	58 (0)	17 (+4)	65 (-9)	38 (+3)	5 (+3)	80 (-7)	
Kansas City	69 (-9)	53 (-14)	38 (+9)	46 (+5)	17 (+7)	64 (-13)	35 (+1)	4 (+2)	77 (-7)	
Cincinnati	75 (-4)	58 (-6)	39 (+4)	30 (-1)	2 (+1)	81 (+1)	42 (+2)	4 (+3)	82 (-5)	
Indianapolis	71 (-9)	53 (-12)	41 (+7)	44 (+15)	7 (+6)	70 (-14)	39 (0)	3 (+2)	79 (-8)	
Columbus	63 (-10)	48 (-9)	47 (+6)	38 (+9)	6 (+5)	71 (-12)	42 (-3)	7 (+5)	78 (-10)	
Milwaukee,										
Waukesha	82 (-2)	67 (-2)	25 (-2)	60 (+4)	33 (+17)	51 (-20)	41 (+10)	5 (+4)	65 (-25)	
Midwestern area										
average	74 (-7)	59 (-8)	34 (+4)	46 (+4)	16 (+7)	65 (-12)	41 (+3)	7 (+4)	75 (-12)	
Southern areas										
Washington, D.C.	63 (-7)	59 (-8)	28 (-1)	48 (+16)	20 (+15)	45 (-25)	39 (+7)	14 (+9)	57 (-18)	
Atlanta	66 (-11)	63 (-10)	28 (+2)	53 (+21)	20 (+18)	49 (-27)	45 (+9)	8 (+7)	59 (-27)	

(Table continues on p. 26.)

Table 1.6 (Continued)

Metropolitan Area	Blacks			Latinos			Asians		
	Dissimilarity	Isolation	Exposure	Dissimilarity	Isolation	Exposure	Dissimilarity	Isolation	Exposure
Baltimore	68 (-7)	66 (-7)	29 (+4)	36 (+3)	4 (+2)	66 (-7)	39 (+1)	7 (+5)	71 (-10)
Tampa, St. Petersburg, Clearwater	65 (-14)	43 (-16)	42 (+7)	45 (-5)	23 (+4)	61 (-9)	34 (0)	4 (+3)	75 (-12)
Miami	74 (-7)	62 (-5)	11 (-7)	44 (-9)	71 (+13)	18 (-16)	31 (+3)	3 (+2)	29 (-29)
Orlando	57 (-17)	41 (-21)	41 (+5)	41 (+10)	27 (+21)	55 (-30)	36 (+4)	5 (+4)	62 (-26)
Fort Lauderdale	62 (-22)	53 (-18)	31 (+6)	32 (+4)	23 (+17)	55 (-29)	28 (+1)	4 (+3)	59 (-30)
Norfolk, Virginia Beach, Newport News	46 (-13)	52 (-9)	42 (+5)	32 (+1)	5 (+2)	60 (-11)	34 (-4)	6 (+2)	63 (-14)
Charlotte, Gastonia, Rock Hill	55 (-8)	45 (-10)	44 (+2)	50 (+18)	13 (+12)	55 (-18)	43 (-4)	4 (+3)	65 (-19)
New Orleans	69 (-2)	71 (0)	24 (-2)	36 (+9)	8 (+2)	61 (-10)	48 (-3)	11 (0)	51 (-7)
Greensboro, Winston-Salem, High Point	59 (-8)	49 (-11)	41 (+3)	51 (+19)	11 (+10)	58 (-16)	46 (+3)	4 (+3)	67 (-19)
Nashville	57 (-9)	46 (-10)	48 (+5)	46 (+23)	9 (+8)	68 (-12)	42 (-1)	4 (+3)	75 (-12)
Raleigh, Durham, Chapel Hill	46 (-6)	43 (-11)	46 (+1)	43 (+19)	12 (+11)	55 (-19)	41 (0)	7 (+5)	70 (-14)
Southern area average	61 (-10)	53 (-10)	35 (+2)	43 (+10)	19 (+10)	54 (-18)	39 (+1)	6 (+4)	62 (-18)

Eastern areas

New York	82 (0)	60 (-3)	11 (-4)	67 (+2)	46 (+6)	21 (-10)	51 (+1)	27 (+11)	40 (-15)
Philadelphia	72 (-6)	62 (-7)	28 (+2)	60 (-3)	27 (+5)	43 (-7)	44 (+3)	10 (+7)	66 (-12)
Boston	66 (-11)	39 (-14)	40 (+4)	59 (+3)	21 (+9)	54 (-13)	45 (-3)	13 (+1)	71 (-7)
Nassau, Suffolk	74 (-3)	41 (-8)	34 (-8)	47 (+10)	23 (+13)	56 (-22)	36 (+5)	8 (+6)	75 (-14)
Pittsburgh	67 (-6)	47 (-7)	50 (+6)	30 (-1)	1 (0)	84 (-3)	49 (+3)	5 (+4)	85 (-7)
Newark	80 (-3)	67 (-3)	17 (-4)	65 (-2)	36 (+9)	36 (-11)	35 (+4)	9 (+7)	69 (-11)
Bergen, Passaic	73 (-7)	36 (-10)	27 (-6)	58 (-3)	39 (+11)	38 (-13)	36 (+2)	16 (+13)	65 (-20)
Providence, Fall River, Warwick	59 (-13)	13 (-10)	56 (-5)	68 (+18)	32 (+24)	48 (-31)	43 (+10)	6 (+5)	69 (-20)
Eastern area average	72 (-6)	46 (-8)	33 (-2)	57 (+3)	28 (+10)	48 (-14)	42 (+3)	12 (+7)	68 (-13)
Overall average	62 (-10)	41 (-12)	37 (+1)	48 (+6)	27 (+10)	51 (-16)	40 (+3)	11 (+6)	62 (-16)

---

*Source:* U.S. Bureau of the Census and Lewis Mumford Center for Comparative Urban and Regional Research.

*Notes:* Due to space limitations, indices and changes are rounded to the nearest whole number. Change from 1980 to 2000 is in parentheses.



Table 1.7 LASUI Sample Characteristics, by Race

	Whites	Blacks	Latinos	Asians
Sex				
Female	49.07%	54.21%	49.73%	51.04%
Male	50.93	45.79	50.27	48.96
Nativity status				
Native-born	100	100	26.27	11.96
Foreign-born	0	0	73.73	88.04
Mean age	44.96	42.08	36.78	44.43
Mean years of education	14.01	12.73	9.58	13.27
Mean family income	\$53,714	\$36,241	\$27,284	\$43,410
Mean net financial assets	10,561	2,753	1,304	6,383
Neighborhood poverty				
Less than 20 percent	96.43	60.44	52.78	79.44
20 to 40 percent	3.48	34.04	43.70	20.21
Over 40 percent	0.19	5.52	3.52	0.34
Neighborhood racial composition				
Mean percent white	63.42	23.57	23.27	41.29
Mean percent black	4.37	40.36	7.21	4.18
Mean percent Latino	21.54	28.25	59.27	28.05
Mean percent Asian	9.97	7.00	9.61	25.90
Mean percent same-race	63.42	40.36	59.27	25.90
Total number of cases	739	1,075	914	1,045

Source: 1993–94 Los Angeles Survey of Urban Inequality.

Table 1.8 LASUI Sample Characteristics, by National Origin for Latino and Asian Respondents

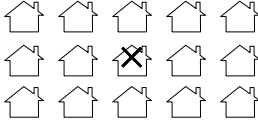
	Mexican	Central American	Chinese	Korean	Japanese
Sex					
Female	48.51%	54.54%	46.80%	53.20%	55.68%
Male	51.49	45.46	53.20	46.80	44.32
Nativity status					
Foreign-born—five years or less in U.S.	10.97	28.77	26.08	24.94	4.89
Foreign-born—six to ten years in U.S.	14.54	17.81	14.32	36.18	1.74
Foreign-born—over ten years in U.S.	42.24	50.70	54.80	38.15	45.80
Native-born	32.25	2.72	4.80	0.73	47.58
Mean age	36.94	36.15	45.65	44.85	41.16
Mean years of education	9.57	9.65	12.87	12.84	14.93
Mean family income	\$29,070	\$20,244	\$40,088	\$35,698	\$64,463
Mean net financial assets	1,680	-177	6,383	931	16,480
Language of interview					
English	39.72%	19.32%	33.83%	25.88%	99.80%
Other	60.28	80.68	66.17	74.12	0.20
Mean English proficiency (0 to 5 scale)	2.29	1.66	2.18	2.01	3.85
Neighborhood poverty					
Less than 20 percent	59.81%	25.06%	77.33%	71.77%	97.96%
20 to 40 percent	37.03	70.01	22.67	27.39	1.92
Over 40 percent	3.16	4.93	0	0.84	0.12
Neighborhood racial composition					
Mean percent white	25.25	15.49	33.04	42.53	55.78
Mean percent black	7.16	7.41	2.57	6.39	3.36
Mean percent Latino	57.73	65.32	30.58	28.77	21.56
Mean percent Asian	9.24	11.09	33.28	21.53	18.94
Mean percent same-race	57.73	65.32	33.28	21.53	19.94
Total number of cases	689	225	527	353	165

Source: 1993–94 Los Angeles Survey of Urban Inequality.

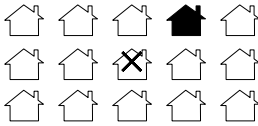
Figure 2.1 Farley-Schuman Neighborhood Cards for White and Black Respondents: 1992 to 1994 Multi-City Study of Urban Inequality

White Respondent Scenarios

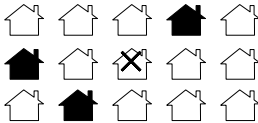
Card 1



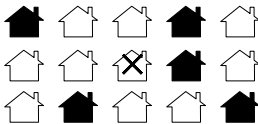
Card 2



Card 3



Card 4

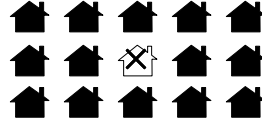


Card 5



Black Respondent Scenarios

Card 1



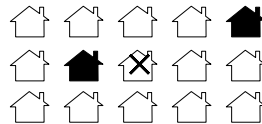
Card 2



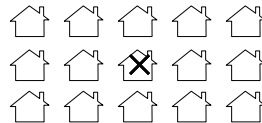
Card 3



Card 4



Card 5



Notes: For multiethnic modification, shading is altered. Hispanic houses are always dark gray, and Asian houses are always light gray for both respondent and target-group representations.

Table 3.1 LASUI Respondents' Housing-Related Characteristics, by Race and Nativity Status

	White	Black	Native-Born Latino	Foreign-Born Latino	Native-Born Asian	Foreign-Born Asian	Total
Housing characteristics							
Monthly housing costs <sup>ab</sup>	\$705 (35)	\$592 (34)†	\$608 (65)	\$636 (28)	\$896 (118)	\$968 (35)+++	\$679 (17)
Home ownership <sup>b</sup>							
Own or buying	51.84%	36.20%	45.08%	19.84%	76.96%	41.13%	39.90%
Renting or other	48.16	63.80	54.92	80.16	23.04	58.87	60.10
Housing as percentage of income <sup>b</sup>							
	26.03 (2.39)	47.72†† (7.40)	24.74 (2.82)	57.33††† (4.01)	23.19 (2.52)	51.22††† (5.03)	38.98 (2.07)
Homeowners	16.22 (1.66)	19.57 (2.98)	19.95 (4.25)	40.93††† (6.88)	23.26† (3.00)	47.76††† (5.00)	22.67 (1.50)
Non-owners	36.14 (3.97)	63.73† (11.14)	28.40 (3.53)	61.47††† (4.81)	22.98† (5.19)	53.54† (7.67)	49.43 (2.93)
Public housing experience <sup>b</sup>							
Never	95.67	80.87	87.88	94.75	96.33	97.04	92.82
In the past	3.88	13.94	11.66	4.52	3.67	0.70	5.93
Currently	0.45	5.19	0.46	0.73	0	2.26	1.25

Neighborhood characteristics

Proximity to non-Hispanic whites<sup>b</sup>

Less than 10 percent	1.38	48.02	25.67	41.78	4.73	15.27	21.80
10 to 25 percent	3.24	9.99	11.47	24.59	22.81	14.97	11.67
26 to 50 percent	12.55	21.29	32.30	24.35	29.76	24.15	19.71
51 to 70 percent	45.52	17.69	24.16	7.53	29.89	32.43	28.44
Over 70 percent	37.31	3.01	6.39	1.76	12.81	13.17	18.38
Mean proximity to non-Hispanic whites	63.42 (1.64)	23.57+++ (2.26)	34.88+++ (3.52)	19.13+++ (1.40)	45.67++ (6.71)	40.67+++ (2.31)	41.74 (1.27)
Median household income	\$44,695 (1,865)	\$29,564+++ (982)	\$33,892+++ (903)	\$27,118+++ (772)	\$47,705 (6,396)	\$37,996+++ (1,032)	\$36,456 (966)
Median home value	264,022 (11,282)	181,793+++ (9,641)	182,872+++ (7,518)	173,057+++ (4,758)	271,240 (33,477)	275,579+++ (9,726)	221,112 (5,968)
Poverty rate <sup>b</sup>							
Less than 20 percent	96.43%	60.44%	72.96%	45.58%	95.11%	77.30%	74.30%
20 to 40 percent	3.38	34.04	26.35	49.89	4.89	22.31	23.57
Over 40 percent	0.19	5.52	0.69	4.53	0	0.39	2.13
Mean poverty rate	8.28 (0.45)	19.26+++ (0.90)	13.49+++ (1.07)	22.20+++ (0.87)	8.30 (1.05)	13.43+++ (0.83)	14.36 (0.45)

Source: Author's compilation.

a. The monthly housing expenditures of homeowners may or may not include taxes and insurance. Respondents were asked to respond with only principal and interest for all mortgages (including second mortgages and the like). A follow-up question confirms whether their response includes taxes, insurance, both, or neither.

b. Standard deviation values are listed in parentheses.  $p < .001$ . Where means differ significantly from whites, +++ $p < .001$ , ++ $p < .01$ , and + $p < .05$ .

Table 3.2 Factors Influencing Respondents' Monthly Housing Expenditure: OLS Regression Coefficients (with Robust Standard Errors)

	Model 1		Model 2	
	B	SE	B	SE
Constant	662.82***	23.77	450.97***	66.46
Race or nativity status				
White (ref)	—	—	—	—
Black	-169.14***	29.36	-164.31***	29.52
Native-born Latino	-76.05	44.04	-44.52	44.94
Foreign-born Latino: ten years or more in the U.S.	-9.30	43.42	116.19*	52.25
Foreign-born Latino: six to ten years in the U.S.	-121.39***	26.80	30.35	51.36
Foreign-born Latino: five years or less in the U.S.	-170.18***	32.54	-4.92	58.27
Native-born Asian	3.09	58.05	7.34	58.96
Foreign-born Asian: ten years or more in the U.S.	364.29***	55.75	471.98***	66.47
Foreign-born Asian: six to ten years in the U.S.	203.83***	55.73	335.88***	64.94
Foreign-born Asian: five years or less in the U.S.	159.87**	45.84	291.69***	59.07
English Ability (0 to 5 scale)			46.90**	13.16
Housing characteristics				
Homeowner (1 = yes)				
Years at residence (/5)				
No public housing experience (ref)				
Past public housing experience				
Currently in public housing				
Financial characteristics				
Income (dollars/5000)				
Missing income (1 = yes)				
Net financial assets (dollars/5000)				
Missing net financial assets (1 = yes)				
Sociodemographic characteristics				
Age in years				
Age squared				
Degree attainment (0 to 4 scale)				
Married with children (1 = yes)				
Household size				
Interactions				
Homeowner × assets				
R-Squared		.10		.11

Source: Author's compilation.

Notes: N = 3,579. Monthly housing expenditure is measured as rent plus utilities for renters; for owners, respondents were asked for the amount of the principal and interest for all mortgages. In a follow-up item, homeowner respondents were asked to confirm whether

Model 3		Model 4		Model 5		Model 6	
B	SE	B	SE	B	SE	B	SE
741.9115***	65.53	656.35***	59.60	198.48*	75.56	204.71**	76.28
—	—	—	—	—	—	—	—
-97.24***	25.55	-36.39	21.15	-40.79	21.32	-41.57	21.43
-74.64	41.80	-66.98	37.87	-67.96	40.29	-69.24	40.75
23.13	44.97	44.97	42.62	-26.39	39.56	-28.59	39.85
-64.81	48.33	-44.54	43.13	-109.64*	42.98	-111.46*	43.06
-120.74*	55.34	-103.23*	49.30	-137.06**	46.15	-137.94**	46.06
3.02	50.16	16.94	48.44	1.15	45.64	2.96	44.97
323.79***	57.66	261.40***	50.38	218.00***	47.61	214.38***	48.06
189.51**	59.20	170.44**	56.70	108.60*	53.81	105.51	53.63
127.35*	51.67	127.15*	49.39	76.71	46.60	70.45	46.46
25.99*	11.85	0.09	11.58	-8.04	9.80	-8.58	9.84
335.44***	35.79	218.78***	37.21	191.36***	36.19	209.48***	38.83
154.90***	11.25	-138.97***	11.14	-120.12***	11.91	-119.80***	11.96
—	—	—	—	—	—	—	—
-53.73*	22.87	-36.14	19.77	-37.25	20.08	-36.58	20.06
-261.87***	33.53	-192.11***	31.99	-140.61***	21.74	-139.23***	21.60
		26.86***	2.58	21.12***	2.65	21.30***	2.61
		-51.49	29.64	-32.89	28.15	-33.43	28.29
		-13.19**	4.00	-10.41**	3.95	-0.68	3.98
		26.35	31.98	13.76	30.74	15.14	30.97
				18.38***	2.50	18.12***	2.47
				-0.20***	0.03	-0.20***	0.03
				34.81***	9.09	34.84***	9.01
				73.99***	20.67	73.22***	20.65
				24.69***	5.14	24.71***	5.17
						-15.29*	7.02
.26		.32		.35		.35	

the monthly housing expenditure included taxes and/or insurance. Models 3 through 6 control for whether homeowners included taxes, insurance, or both in their monthly housing expenditure (the reference category is principal and interest only).

\*\*\* p < .001; \*\* p < .01; \* p < .05

Table 3.3 Factors Influencing Homeownership: Logistic Regression Coefficients (with Robust Standard Errors)

	Model 1		
	B	SE	Odds Ratio
Constant	-0.12	0.12	—
Race and nativity status			
White (ref)	—	—	—
Black	-0.59***	0.16	0.55
Native-born Latino	-0.39*	0.19	0.67
Foreign-born Latino: ten years or more in the U.S.	-0.94***	0.20	0.39
Foreign-born Latino: six to ten years in the U.S.	-2.57***	0.37	0.08
Foreign-born Latino: five years or less in the U.S.	-3.82***	0.55	0.02
Native-born Asian	0.90***	0.23	2.46
Foreign-born Asian: ten years or more in the U.S.	0.27	0.18	1.30
Foreign-born Asian: six to ten years in the U.S.	-0.81**	0.28	0.44
Foreign-born Asian: five years or less in the U.S.	-1.06***	0.23	0.35
English ability (0 to 5 scale)			
Public housing experience			
Never lived in public housing (ref)			
Lived in public housing in the past			
Financial characteristics			
Income			
Less than \$20,000 (ref)			
\$20,000 to \$39,999			
\$40,000 to \$59,999			
\$60,000 to \$89,999			
\$90,000 or more			
Missing income (1 = yes)			
Net financial assets			
Negative or none (ref)			
Up to \$5,000			
\$5,001 to \$10,000			
Over \$10,000			
Missing net financial assets (1 = yes)			
Sociodemographic characteristics			
Age			
21 to 29 (ref)			
30 to 39			
40 to 49			
50 to 59			
60 to 69			
70 and older			
Degree attainment (0 to 4 scale)			
Married with children (1 = yes)			
Household size			
Log pseudo-likelihood		-2,143.76	
Pseudo R-Squared		.08	



Table 3.3 (Continued)

Model 2			Model 3			Model 4		
B	SE	Odds Ratio	B	SE	Odds Ratio	B	SE	Odds Ratio
-1.80***	0.23	—	-2.73***	0.25	—	-5.50***	0.32	—
—	—	—	—	—	—	—	—	—
-0.56***	0.16	0.57	0.37†	0.19	1.44	0.36*	0.18	1.44
-0.15	0.20	0.86	0.38	0.24	1.46	0.53†	0.28	1.70
0.01	0.21	1.01	0.69**	0.23	2.00	0.94***	0.24	2.55
-1.42***	0.39	0.24	-0.88†	0.46	0.41	-0.10	0.49	0.91
-2.57***	0.59	0.08	-1.84**	0.56	0.16	-0.79	0.59	0.45
0.96***	0.24	2.60	0.44*	0.22	1.56	0.72**	0.26	2.05
1.11***	0.22	3.03	0.71**	0.25	2.03	0.90**	0.26	2.45
0.17	0.32	1.18	0.06	0.33	1.07	0.45	0.35	1.57
-0.05	0.28	0.95	-0.55†	0.30	0.58	0.16	0.33	1.17
0.37***	0.04	1.45	0.11*	0.05	1.12	0.33***	0.06	1.39
—	—	—	—	—	—	—	—	—
—	—	—	0.22	0.18	1.25	0.10	0.19	1.10
—	—	—	—	—	—	—	—	—
—	—	—	0.81***	0.10	2.24	1.01***	0.12	2.75
—	—	—	1.40***	0.16	4.07	1.78***	0.17	5.94
—	—	—	—	—	—	—	—	—
—	—	—	2.57***	0.17	13.01	2.90***	0.20	18.23
—	—	—	1.98***	0.25	7.25	2.25***	0.24	9.45
—	—	—	-0.12	0.12	0.88	-0.19	0.14	0.83
—	—	—	—	—	—	—	—	—
—	—	—	.38**	0.13	1.46	0.32*	0.15	1.38
—	—	—	1.47***	0.16	4.37	1.39***	0.17	4.02
—	—	—	2.01***	0.12	7.43	1.59***	0.14	4.92
—	—	—	-0.12	0.13	0.89	-0.19	0.15	0.83
—	—	—	—	—	—	—	—	—
—	—	—	—	—	—	0.66***	0.17	1.93
—	—	—	—	—	—	1.20***	0.18	3.31
—	—	—	—	—	—	2.01***	0.18	7.46
—	—	—	—	—	—	2.29***	0.20	9.87
—	—	—	—	—	—	2.86***	0.21	17.43
—	—	—	—	—	—	-0.07	0.06	0.93
—	—	—	—	—	—	0.53***	0.13	1.71
—	—	—	—	—	—	0.18***	0.03	1.19
-2,100.15			-1,689.21			-1,520.70		
.10			.28			.35		

Source: Author's compilation.

Notes: N = 3,587. Respondents currently living in public housing are excluded from this analysis.

\*\*\* p < .001; \*\* p < .01; \* p < .05; † p < .10

Table 3.4 OLS Regression Coefficients Predicting LASUI Respondents' Neighborhood Proximity To Non-Hispanic Whites, by Race

	Whites		Blacks		Latinos		Asians	
	B	SE	B	SE	B	SE	B	SE
Constant	28.09***	4.93	10.85***	2.71	15.68***	3.12	11.79*	5.03
Homeowner (1 = yes)	3.21	2.36	-5.32*	2.19	-2.61	2.28	4.44†	2.25
Public housing experience								
Never (ref)	—	—	—	—	—	—	—	—
In the past	-4.95	3.96	-0.80	1.59	6.31*	2.69	4.05	4.52
Currently	-9.52†	4.88	0.79	2.54	-3.45	3.59	3.96	4.50
Income								
Less than \$20,000 (ref)	—	—	—	—	—	—	—	—
\$20,000 to \$39,999	11.05***	2.64	2.19	1.27	5.56***	1.36	4.62*	2.10
\$40,000 to \$59,999	16.20***	3.39	6.81**	2.20	14.59***	2.95	13.23***	2.82
\$60,000 to \$89,999	16.15***	3.50	9.69**	2.93	22.13***	5.70	18.94***	3.63
\$90,000 or more	15.91**	4.74	13.47**	4.33	13.98*	6.70	18.95***	3.50
Missing income (1 = yes)	-0.26	2.68	0.56	1.49	0.76	1.75	2.36	1.44
Net financial assets								
Negative or none (ref)	—	—	—	—	—	—	—	—
\$1 to \$5,000	-0.41	2.77	1.18	1.01	0.71	1.56	1.22	2.00
\$5,001 to \$10,000	2.96	2.97	-0.04	1.75	0.30	3.26	1.19	2.73
Over \$10,000	5.82**	2.17	2.05	1.89	0.20	4.46	2.76	2.46
Missing net financial assets (1 = yes)	-8.03**	2.74	-0.88	1.52	-1.94	1.78	-4.75*	2.20
Age								
21 to 29 (ref)	—	—	—	—	—	—	—	—
30 to 39	-3.83	2.41	-1.01	1.49	2.13	1.28	-0.19	2.16
40 to 49	-4.84*	1.94	-2.45	1.53	5.45**	1.91	0.72	2.33
50 to 59	-4.38	3.17	-2.54	1.67	7.26**	2.20	0.27	2.63
60 to 69	0.07	3.16	-1.01	2.27	6.30*	2.72	-3.93	3.30
70 or older	-1.56	3.30	-1.54	2.13	7.15	4.75	1.67	3.38

(Table continues on p. 86.)

Table 3.4 (Continued)

Education									
Less than high school (ref)	—	—	—	—	—	—	—	—	—
High school graduate or GED	12.22***	3.33	1.40	1.11	0.31	1.10	5.83**	1.89	
Some college	10.88**	3.59	0.48	1.17	4.51	3.57	8.79**	3.00	
Bachelor's degree	9.48*	4.17	2.75	2.06	6.90	3.57	11.72***	2.54	
Advanced degree	13.39**	3.88	16.03**	4.76	19.66*	7.35	8.65*	3.64	
Household structure									
Married with children (1 = yes)	1.48	2.33	1.92	1.47	2.11	1.28	0.13	1.92	
Household size	1.49*	0.74	-1.24**	0.35	-0.90**	0.30	0.94	0.57	
Nativity status									
U.S.-born (ref)					—	—	—	—	
Foreign-born: over ten years in the U.S.					-8.14**	2.82	4.05	3.44	
Foreign-born: six to ten years in the U.S.					-7.30*	3.21	5.50	3.84	
Foreign-born: five years or less in the U.S.					-6.27†	3.35	4.65	4.00	
English language ability									
None (ref)					—	—	—	—	
Low					3.56**	1.28	0.21	1.78	
Medium					4.84*	1.86	0.87	2.17	
High (English only household)					8.90†	4.86	-1.92	3.60	
National origin									
Mexican (ref)							—	—	
Central American					-2.55†	1.36			
Japanese (ref)							—	—	
Chinese							-4.22†	2.43	
Korean							-3.64	3.41	
R-Squared	0.22		0.10		0.28			0.28	
Number of cases	739		1,075		914			1,045	

Source: Author's compilation.

Notes: \*\*\* p < .001; \*\* p < .01; \* p < .05; † p < .10

Table 3.5 OLS Regression Coefficients Predicting LASUI Respondents' Neighborhood Socioeconomic Status, by Race

	Whites		Blacks		Latinos		Asians	
	B	SE	B	SE	B	SE	B	SE
Constant	18,534***	2,940	19,011***	1,396	22,992***	1,834	23,537***	4,192
Homeowner (1 = yes)	6,351***	1,465	1,515	1,271	1,807	1,227	5,890**	1,903
Public housing experience								
Never (ref)	—	—	—	—	—	—	—	—
In the past	-3,596	1,948	521	689	3,982*	1,662	4,560	4,186
Currently	-7,361*	3,712	-5,043**	1,454	-5,465†	2,929	-9,754**	3,400
Income								
Less than \$20,000 (ref)	—	—	—	—	—	—	—	—
\$20,000 to \$39,999	5,550***	1,452	4,120***	897	3,606***	652	2,792†	1,417
\$40,000 to \$59,999	8,604***	1,774	7,985***	1,776	7,603***	1,489	7,460**	2,367
\$60,000 to \$89,999	11,647***	2,500	9,258***	2,127	10,164***	2,178	12,496***	2,680
\$90,000 or more	16,633***	3,469	16,011***	3,315	11,219**	3,510	19,369***	3,641
Missing income (1 = yes)	4,371	2,935	-307	1,069	261	945	1,921	1,360
Net financial assets								
Negative or none (ref)	—	—	—	—	—	—	—	—
\$1 to \$5,000	550	1,391	365	794	566	573	-541	1,463
\$5,001 to \$10,000	4,614	2,703	1,090	1,300	-2,422	1,968	2,928	2,134
Over \$10,000	5,689**	2,049	1,320	1,473	-450	1,748	7,078**	2,544
Missing net financial assets (1 = yes)	-2,269	2,333	371	1,060	320	891	-3,490*	1,712
Age								
21 to 29 (ref)	—	—	—	—	—	—	—	—
30 to 39	-2,910	1,692	-367	1,016	-216	729	-3,654*	1,830
40 to 49	-5,040*	1,970	-1,074	1,062	1,385	952	104	1,871
50 to 59	-4,362	2,388	-1,615	1,195	3,376**	1,133	-3,305	2,166
60 to 69	3,597	3,477	-900	1,621	2,285	1,566	-3,844	2,497
70 and older	-2,516	2,614	-2,212	1,352	3,690	3,151	-964	2,713

Education								
Less than high school (ref)	—	—	—	—	—	—	—	—
High school graduate or GED	6,040***	1,617	1,638**	505	114	840	2,349	1,629
Some college	7,834***	1,879	1,083	788	-98	1,530	5,894*	2,274
Bachelor's degree	7,208**	2,457	3,071*	1,334	2,938	1,747	8,405***	1,896
Advanced degree	12,967***	3,237	8,515*	3,181	11,752**	4,202	8,998**	3,207
Household structure								
Married with children (1 = yes)	-2,938	1,672	-712*	882	513	610	-232	1,448
Household size	2,083**	590	-234	222	-46	200	1,602**	576
Nativity status								
U.S.-born (ref)					—	—	—	—
Foreign-born: over ten years in the U.S.					-3,442**	1,236	-1,522	3,090
Foreign-born: six to ten years in the U.S.					-3,967**	1,410	-797	3,353
Foreign-born: five years or less in the U.S.					-3,896*	1,465	-1,232	3,142
English language ability								
None (ref)					—	—	—	—
Low					1,295†	737	190	1,581
Medium					2,053*	945	-2,745	1,693
High (English only household)					5,473**	1,775	-6,686†	3,412
National origin								
Mexican (ref)					—	—	—	—
Central American					-3,234***	792		
Japanese (ref)							—	—
Chinese							852	1,700
Korean							1,164	2,371
R-Squared	0.34		0.27		0.35		0.35	
Number of cases	739		1,075		914		1,045	

Source: Author's compilation.

Notes: Coefficients and standard errors are rounded to the nearest whole dollar.

\*\*\* p < .001; \*\* p < .01; \* p < .05; † p < .10

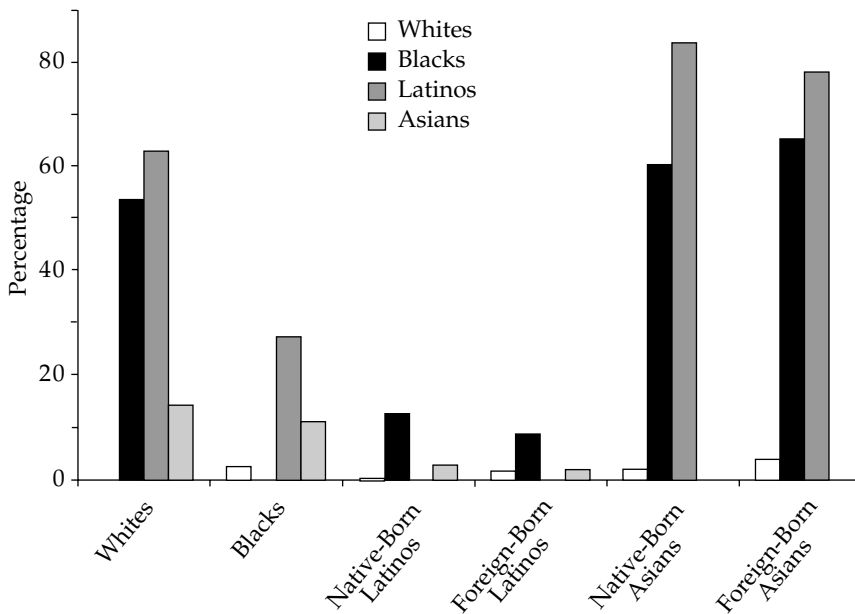
Table 3.6 Predicted Values of Neighborhood Proximity to Non-Hispanic Whites and Neighborhood Median Household Income, by Race

Neighborhood Outcome	Whites	Blacks	Latinos	Asians
Proximity to non-Hispanic whites				
Poor native	27.63%	4.65%	26.88%	10.32%
Poor immigrant	—	—	15.27	17.10
Affluent native	65.96	30.88	58.11	45.12
Affluent immigrant	—	—	45.91	51.96
Median household income				
Poor native	\$20,013	\$16,894	\$29,304	\$22,979
Poor immigrant	—	—	21,230	28,623
Affluent native	61,652	44,255	53,632	64,315
Affluent immigrant	—	—	46,770	66,733

*Source:* Author's compilation.

*Notes:* Poor immigrants have five years or less in the United States, speak little English, do not own their homes, and are in the lowest categories for income, assets, and education (less than \$20,000 in income, zero or negative assets, and less than high school). Poor natives are comparable to poor immigrants, except that they are U.S.-born and have high English ability. Affluent natives are U.S.-born, have high English ability, are homeowners, and place in the highest categories for income, assets, and education (\$90,000 and over in income, over \$10,000 in assets, and an advanced degree). Affluent immigrants are comparable to affluent natives, except that they have been in the United States more than ten years and report having "medium" English ability. All other characteristics are standardized to the overall sample mean.

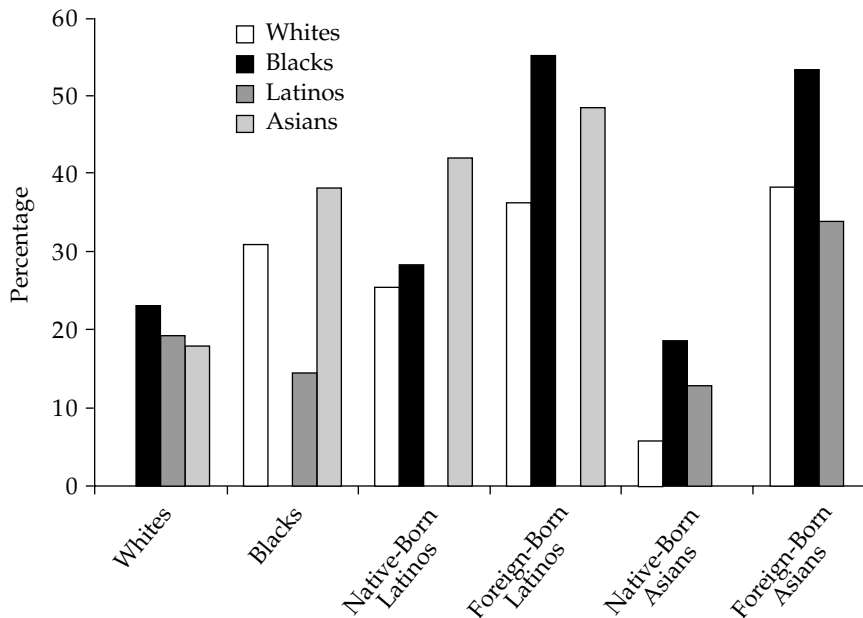
Figure 4.1 Respondents Holding Negative Stereotypes of Out-Groups, by Race and Nativity Status



Source: Author's compilation.

Notes: Measures are stereotype difference scores greater than 1.00.  $p < .001$  for all except negative stereotyping of whites ( $p < .01$ ).

Figure 4.2 Respondents Perceiving Social Distance Between Their Own Group and Various Out-Groups, by Race and Nativity Status

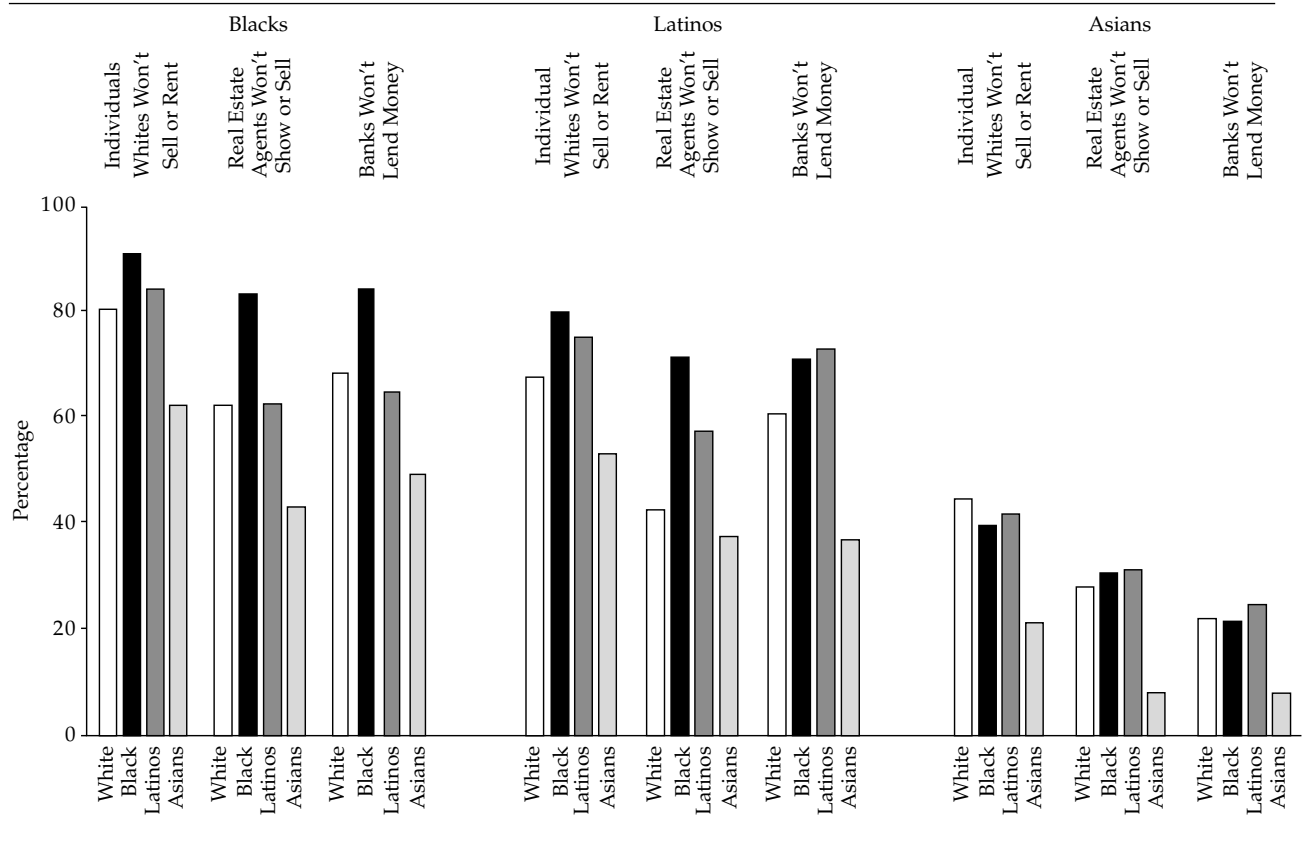


Source: Author's compilation.

Notes: Measures are social distance difference scores greater than 1.00.  $p < .001$  for all except social distance from whites ( $p < .05$ ).



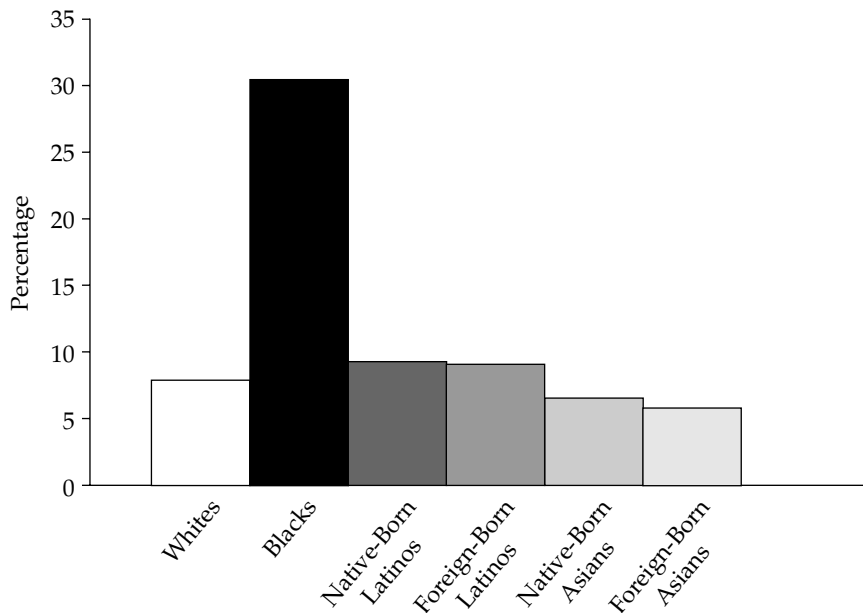
Figure 4.3 Perception That Blacks, Latinos, and Asians Face Various Housing Market Barriers “Sometimes” or “Very Often,” by Respondent Race: Summary Statistics



Source: Author's compilation.

Notes: For black target group,  $p < .001$  for individual whites won't sell or rent and banks won't lend money;  $p < .01$  for real estate agents won't show or sell. For Latino target group,  $p < .001$  except for individual whites won't sell or rent ( $p < .01$ ). For Asian target group,  $p < .001$  for individual whites won't sell or rent;  $p < .01$  for real estate agents won't show or sell;  $p < .05$  for banks won't lend money.

Figure 4.4 The Belief Among LASUI Respondents That They Experienced Housing Market Discrimination, by Respondent Race and Nativity Status

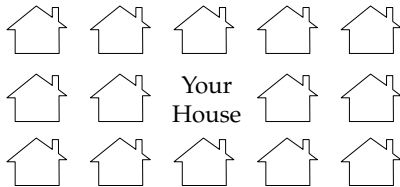


Source: Author's compilation.

Notes:  $p < .001$ .

Figure 4.5 Multiethnic Neighborhood Experiment Showcard

---



---

*Source:* 1993–94 Los Angeles Survey of Urban Inequality.

Table 4.1 Common Fate Identity, by Respondent Race and Nativity Status: Summary Statistics

	Whites	Blacks	Native- Born Latinos	Foreign- Born Latinos	Native- Born Asians	Foreign- Born Asians
Sense of common fate***						
None	27.12%	21.60%	38.20%	27.97%	17.16%	22.69%
Not very much	9.26	6.19	7.51	5.31	24.05	9.51
Some	43.38	35.24	36.59	35.69	52.92	47.19
A lot	20.23	36.97	17.70	31.03	5.87	20.61
Mean**	1.57	1.88††	1.34	1.70	1.48	1.66

Source: Author's compilation.

\*\*\*  $p < .001$ ; \*\*  $p < .01$ ; †† Mean value is significantly different from whites,  $p < .01$

Table 4.2 Perceived Social Class Disadvantage, Racial Stereotyping, Social Distance, and White Discrimination, by Respondent Race and Nativity Status and Target-Group Race: Summary Statistics

Target Group and Traits	Whites	Blacks	Native-Born Latinos	Foreign-Born Latinos	Native-Born Asians	Foreign-Born Asians
<b>Whites</b>						
Social class disadvantage						
Poverty	3.63	2.87	3.10	2.35	3.28	3.00
Difference score	—	-2.21	-1.64	-3.12	0.11	-0.61
Racial stereotyping						
Unintelligent	3.05	3.45	3.59	2.88	3.31	3.09
Prefers welfare	2.47	2.88	2.81	2.93	2.38	2.74
Poor English	1.95	1.95	1.76	1.42	1.76	1.37
Drugs and gangs	3.01	4.01	3.55	3.56	2.92	3.46
Absolute rating	2.62	3.08	2.93	2.70	2.59	2.67
Difference score	—	-0.63	-1.35	-1.58	-0.04	-0.21
Social distance						
Hard to get along with	3.21	3.98	3.66	3.67	3.08	3.82
Difference score	—	0.87	0.83	0.95	0.23	0.90
Discrimination						
Discriminates	4.05	5.31	4.71	4.97	4.62	4.60
<b>Blacks</b>						
Social class disadvantage						
Poverty	5.21	5.09	5.03	4.92	5.29	5.36
Difference score	1.57	—	0.29	-0.55	2.13	1.74
Racial stereotyping						
Unintelligent	3.82	3.39	4.05	3.90	4.03	4.44
Prefers welfare	4.16	4.04	5.04	5.63	4.27	5.25
Poor English	3.42	2.71	3.36	2.51	2.94	2.06
Drugs and gangs	4.60	4.68	5.21	5.36	4.90	5.01
Absolute rating	4.00	3.71	4.41	4.35	4.04	4.19
Difference score	1.38	—	0.14	0.07	1.41	1.32
Social distance						
Hard to get along with	3.83	3.11	3.69	4.54	3.45	4.35
Difference score	0.62	—	0.87	1.83	0.61	1.42
Discrimination						
Discriminates	4.70	3.96	4.92	4.94	4.81	4.13

Table 4.2 (Continued)

Target Group and Traits	Whites	Blacks	Native- Born Latinos	Foreign- Born Latinos	Native- Born Asians	Foreign- Born Asians
<b>Latinos</b>						
Social class disadvantage						
Poverty	5.37	5.30	4.74	5.47	5.32	5.50
Difference score	1.73	0.21	—	—	2.16	1.89
Racial stereotyping						
Unintelligent	3.98	3.93	3.87	3.55	4.04	4.59
Prefers welfare	3.96	4.19	4.29	4.41	4.15	5.25
Poor English	4.70	4.83	4.05	4.50	4.45	4.53
Drugs and gangs	4.59	4.74	4.90	4.66	4.97	4.65
Absolute rating	4.31	4.42	4.28	4.28	4.40	4.76
Difference score	1.69	0.72	—	—	1.77	1.88
Social distance						
Hard to get along with	3.69	3.40	2.83	2.72	3.27	3.76
Difference score	0.48	0.29	—	—	0.43	0.84
Discrimination						
Discriminates	4.38	4.40	4.08	3.41	4.57	3.48
<b>Asians</b>						
Social class disadvantage						
Poverty	3.61	3.12	3.14	2.87	3.16	3.61
Difference score	-0.02	-1.97	-1.60	-2.60	—	—
Racial stereotyping						
Unintelligent	2.88	3.30	3.13	2.75	2.67	2.85
Prefers welfare	2.30	2.72	2.67	2.87	1.88	2.36
Poor English	3.83	4.84	4.62	3.87	3.05	3.69
Drugs and gangs	3.19	3.99	3.46	3.32	2.91	2.59
Absolute rating	3.05	3.71	3.47	3.20	2.63	2.87
Difference score	0.43	0.01	-0.81	-1.08	—	—
Social distance						
Hard to get along with	3.64	4.29	4.12	4.17	2.84	2.92
Difference score	0.43	1.17	1.29	1.46	—	—
Discrimination						
Discriminates	4.33	5.19	4.69	4.51	4.45	3.53
Number of cases	739	1,075	177	737	127	917

Source: Author's compilation.

Notes:  $p < .001$  except poverty for black target group ( $p < .01$ ), drugs and gangs for Latino target group ( $p =$  not significant), and social distance difference score for white ( $p < .05$ ) and Latino target groups ( $p < .01$ ).

Table 4.3 Overall Belief That Blacks, Latinos, and Asians Face Housing Market Barriers, by Respondent Race: Summary Statistics

	Whites	Blacks	Latinos	Asians
Housing market barriers faced by:				
Blacks	2.76	3.20+++	2.79	2.40++
Latinos	2.51	2.87+++	2.81++	2.23†
Asians	2.01	2.14	2.14	1.74++

*Source:* Author's compilation.

*Notes:* Comparisons are by respondent race, within target group. Overall index measure is the average of the three individual items. Scores range from 1 (almost never) to 4 (very often). Cronbach's alpha is .79 for the black and Latino target groups and .81 for the Asian target group.

\*\*\*  $p < .001$ ; where mean values differ significantly from whites, +++  $p < .001$ , ++  $p < .01$ , and †  $p < .05$

Table 4.4 Perceptions of Blacks, Latinos, and Asians as Competitive Threats to Economic Opportunities and Political Influence, by Respondent Race and Nativity Status: Summary Statistics

Target Group	Whites	Blacks	Native-Born Latinos	Foreign-Born Latinos	Native-Born Asians	Foreign-Born Asians
<b>Blacks</b>						
Job threat	26.61%	—	27.58%	30.57%	13.96%	25.96%
Political threat	30.47	—	26.46	42.10	11.59	36.34
Mean overall threat	3.51	—	3.63	4.51+++	2.66	3.81
<b>Latinos</b>						
Job threat	26.59%	52.37%	—	—	10.13%	32.20%
Political threat	34.56	44.56	—	—	18.68	48.01
Mean overall threat	3.67	4.65+++	—	—	2.35	4.26+
<b>Asians</b>						
Job threat	31.89%	63.67%	41.99%	49.92%	—	—
Political threat	31.99	54.10	46.88	58.20	—	—
Mean overall threat	3.74	5.31+++	4.32	6.02+++	—	—

Source: Author's compilation.

Notes: Percentages are for respondents reporting that they "generally" or "strongly" agreed that the group posed a threat. Mean overall threat is the combined average of respondents' scores on individual items, measured as a 1–5 scale where 1 indicates no perceived threat, 5 indicates strong perceived threat, and 3 is a neutral category. Cronbach's alpha is .78 for blacks, .76 for Latinos, and .80 for Asians. For percentages,  $p < .001$  except black political threat ( $p < .01$ ). For mean overall threat values significantly different from whites, +++  $p < .001$ , ++  $p < .01$ , and +  $p < .05$ .



Table 4.5 Neighborhood Racial Composition Preferences, by Respondent and Target-Group Race: Summary Statistics

Target-Group Race	Whites	Blacks	Native-Born Latinos	Foreign-Born Latinos	Native-Born Asians	Foreign-Born Asians
<b>White neighbors</b>						
Mean percentage	—	21.52%	26.18%	24.50%	27.52%	30.62%
No whites	—	8.71	5.67	15.81	0.74	8.34
<b>Black neighbors</b>						
Mean percentage	14.91%	—	15.39	11.74	16.29	9.38
No blacks	20.04	—	18.97	38.07	14.83	44.44
<b>Latino neighbors</b>						
Mean percentage	15.82	19.83	—	—	19.76	13.54
No Latinos	18.46	9.36	—	—	8.76	29.38
<b>Asian neighbors</b>						
Mean percentage	16.29	16.25	16.05	15.71	—	—
No Asians	17.78	16.78	18.61	25.12	—	—
<b>Same-race neighbors</b>						
Mean percentage	52.97	42.39	42.37	48.04	36.43	46.46
All same-race	12.35	3.02	3.84	8.39	0.74	8.13

Source: Author's compilation.

Notes:  $p < .001$ .

Table 5.1 Racial Attitudes and Neighborhood Racial Composition Preferences, by Respondent Race: Correlations

Target-Group Race	Whites	Blacks	Latinos	Asians
<b>White neighbors</b>				
Social class disadvantage	—	0.140***	0.035	0.039
In-group attachment	—	-0.145***	-0.088**	0.091**
Racial stereotyping	—	-0.079*	-0.069*	0.033
Social distance	—	-0.276***	-0.211***	-0.180***
White discrimination	—	-0.216***	-0.110**	0.031
<b>Black neighbors</b>				
Social class disadvantage	-0.051	—	0.034	-0.227***
In-group attachment	0.004	—	-0.046	0.002
Racial stereotyping	-0.360***	—	-0.051	-0.115***
Social distance	-0.270***	—	-0.182***	-0.102**
Racial-group threat (blacks) <sup>a</sup>	-0.213***	—	-0.034	-0.309***
<b>Latino neighbors</b>				
Social class disadvantage	-0.035	0.014	—	-0.179***
In-group attachment	-0.062	0.021	—	-0.092**
Racial stereotyping	-0.248***	-0.057	—	-0.193***
Social distance	-0.186	-0.043	—	-0.051
Racial-group threat (Latinos) <sup>a</sup>	-0.280***	-0.022	—	-0.092*
<b>Asian neighbors</b>				
Social class disadvantage	-0.103**	0.109***	-0.009	—
In-group attachment	-0.053	-0.066*	-0.039	—
Racial stereotyping	-0.261***	-0.078*	-0.016	—
Social distance	-0.202***	-0.263***	-0.130***	—
Racial-group threat (Asians) <sup>a</sup>	-0.303***	-0.192***	-0.122**	—
<b>Same-race neighbors<sup>b</sup></b>				
Social class disadvantage	0.080*	-0.045	-0.080*	0.073*
In-group attachment	0.049	0.124***	0.112***	0.022
Racial stereotyping	0.343***	0.090**	-0.006	0.032
Social distance	0.245***	0.236***	0.233***	0.049
Racial-group threat	0.317***	0.146***	0.112***	0.167***
White discrimination	—	0.093**	0.111***	-0.040

Source: Author's compilation.

a. Competitive threat items also relied on an experimental ballot, such that roughly one-third of whites considered blacks (N = 234), Latinos (N = 241), and Asians (N = 228); about half of each nonwhite group considered group competition from the remaining two groups (for blacks, 512 got the Latino ballot and 523 the Asian ballot; 441 Latinos considered blacks, and 467 responded to Asians as competitive threats; among Asian respondents, 505 considered whether or not blacks pose a competitive threat, while 509 responded to the Latino items).

b. For same-race neighbors, racial attitudes combine responses for all out-groups (for example, for white respondents, attitudes toward blacks, Latinos, and Asians are combined for perceived SES, stereotype, and social distance measures and for competitive threat).

\*\*\* p < .001; \*\* p < .01; \* p < .05

Table 5.2 Effects of Various Racial Attitudes on Whites' Preferences for Black, Latino, Asian, and Same-Race Neighbors: Selected OLS Regression Coefficients

	Black Neighbors			Latino Neighbors			Asian Neighbors			Same-Race Neighbors		
	B	SE	Beta	B	SE	Beta	B	SE	Beta	B	SE	Beta
Racial attitudes												
Social class disadvantage	0.44	0.30	0.05	-0.14	0.28	-0.02	-0.42	0.47	-0.04	0.35	0.89	0.02
In-group attachment												
None or low (ref)	—	—	—	—	—	—	—	—	—	—	—	—
Medium	0.17	0.89	0.01	0.68	0.39	-0.03	-0.89	0.83	-0.04	0.66	2.00	0.01
High	0.30	0.85	0.01	-1.19	0.85	-0.05	-0.89	0.74	-0.04	1.66	1.61	0.03
Racial stereotyping	-1.92***	0.46	-0.19	-1.36***	0.34	-0.15	-2.23**	0.71	-0.15	5.00***	1.11	0.18
Social distance	-0.75**	0.27	-0.11	-0.69*	0.31	-0.10	-1.15**	0.36	-0.15	1.95**	0.68	0.11
Racial group threat	-0.56*	0.22	-0.10	-0.62**	0.18	-0.12	-0.61**	0.21	-0.11	1.83***	0.40	0.16
Constant	25.12***	2.87		18.53***	2.72		18.67***	2.56		28.63***	5.23	
R-squared		0.28***			0.16***			0.16***			0.23***	

Source: Author's compilation.

Notes: N = 705. Models control for sex, age, education, income, political ideology, homeownership status, public housing experience, household structure, and the presence of target-group members in actual neighborhoods.

\*\*\* p < .001; \*\* p < .01; \* p < .05

Table 5.3 Effects of Various Racial Attitudes on Blacks' Preferences for White, Latino, Asian, and Same-Race Neighbors: Selected OLS Regression Coefficients

	White Neighbors			Latino Neighbors			Asian Neighbors			Same-Race Neighbors		
	B	SE	Beta	B	SE	Beta	B	SE	Beta	B	SE	Beta
Racial attitudes												
Social class disadvantage	0.33†	0.19	0.06	-0.09	0.35	-0.01	0.51**	0.15	0.10	-1.11**	0.33	-0.09
In-group attachment												
None or low (ref)	—	—	—	—	—	—	—	—	—	—	—	—
Medium	1.82**	0.60	0.08	-0.14	0.65	0.01	-0.00	0.56	-0.00	-1.97*	0.97	-0.05
High	-1.20	0.76	-0.05	-0.60	0.88	-0.02	-0.50	0.82	-0.02	2.47†	1.61	0.06
Racial stereotyping	-0.72*	0.35	-0.08	-1.06*	0.46	-0.09	-0.53*	0.26	-0.06	2.68***	0.60	0.13
Social distance	-0.73***	0.19	-0.14	-0.32	0.20	-0.05	-0.54**	0.14	-0.12	1.11**	0.34	0.11
White discrimination	-0.50*	0.26	-0.07	—	—	—	—	—	—	0.26	0.34	0.02
Racial-group threat	—	—	—	-0.16	0.13	-0.04	-0.28†	0.15	-0.07	0.45†	0.24	0.06
Constant	20.37***	2.02		19.00***	2.15		13.97***	1.47		43.92***	4.33	
R-squared		0.12***			0.06***			0.09***			0.13***	

Source: Author's compilation.

Notes: N = 1,038. Models control for sex, age, education, income, political ideology, homeownership status, public housing experience, household structure, and the presence of target-group members in actual neighborhoods.

\*\*\* p < .001; \*\* p < .01; \* p < .05; † p < .10

Table 5.4 Effects of Immigration-Related Characteristics and Various Racial Attitudes on Latinos' Preferences for White, Black, Asian, and Same-Race Neighbors: Selected OLS Regression Coefficients

	White Neighbors		
	B	SE	Beta
Immigration-related characteristics			
Mexican (ref)	—	—	—
Central American	3.53*	1.42	0.09
U.S.-born (ref)	—	—	—
Foreign-born: five years or less in the U.S.	6.28*	2.84	0.14
Foreign-born: six to ten years in the U.S.	5.33*	2.05	0.12
Foreign-born: over ten years in the U.S.	4.59**	1.40	0.14
English proficiency	0.89	0.52	0.08
Racial attitudes			
Social class disadvantage	0.18	0.29	0.02
In-group attachment			
None or low (ref)	—	—	—
Medium	0.00	1.18	0.00
High	-0.63	1.05	-0.02
Racial stereotyping	-1.40**	0.49	-0.11
Social distance	-0.72***	0.21	-0.11
White discrimination	-0.66*	0.27	-0.08
Racial-group threat	—	—	—
Interactions			
Five years or less in the U.S. × English	2.82*	1.35	0.09
More than ten years in the U.S. × English	—	—	—
Five years or less in the U.S. × stereotyping	3.21***	0.91	0.17
Five years or less in the U.S. × class disadvantage	—	—	—
Five years or less in the U.S. × high in-group	—	—	—
Five years or less in the U.S. × social distance	—	—	—
Constant	13.27***	3.91	
R-squared		0.19***	

Table 5.4 (Continued)

Black Neighbors			Asian Neighbors			Same-Race Neighbors		
B	SE	Beta	B	SE	Beta	B	SE	Beta
—	—	—	—	—	—	—	—	—
0.89	0.78	0.03	-0.34	1.00	-0.01	-3.74*	1.44	-0.07
—	—	—	—	—	—	—	—	—
-0.78	1.96	-0.02	-3.68*	1.65	-0.11	13.97***	3.40	0.24
-2.65	1.85	-0.08	-0.02	1.76	-0.00	2.46	3.13	0.04
-2.92*	1.24	-0.12	0.44	1.38	0.02	6.65	3.77	0.15
0.94**	0.33	0.11	0.10	0.43	0.01	-0.26	1.06	-0.02
-0.65*	0.32	-0.07	-0.21	0.21	-0.03	-0.18	0.47	-0.01
—	—	—	—	—	—	—	—	—
0.19	0.89	0.01	2.35*	0.33	0.09	-2.79†	1.46	-0.06
0.36	0.86	0.01	-0.96	0.92	-0.04	2.63†	1.46	0.06
-0.50	0.34	-0.04	-0.81*	0.36	-0.07	0.65	0.52	0.03
-0.90***	0.22	-0.18	-0.44**	0.18	-0.08	1.17***	0.32	0.10
—	—	—	—	—	—	0.74*	0.33	0.06
0.06	0.20	0.01	-0.32	0.24	-0.05	0.31	0.44	0.03
—	—	—	—	—	—	-5.61***	1.08	-0.13
—	—	—	—	—	—	-2.80**	1.06	-0.15
—	—	—	—	—	—	—	—	—
1.55*	0.61	0.09	—	—	—	—	—	—
-5.60**	1.80	-0.15	—	—	—	—	—	—
0.98*	0.44	0.11	—	—	—	—	—	—
13.15***	2.58		10.43***	2.59		41.62***	6.95	
	0.15***			0.14***			0.23***	

Source: Author's compilation.

Notes: N = 908. Models control for sex, age, education, income, political ideology, homeownership status, public housing experience, household structure, and the presence of target-group members in actual neighborhoods.

\*\*\* p < .001; \*\* p < .01; \* p < .05; † p < .10

Table 5.5 Effects of Immigration-Related Characteristics and Various Racial Attitudes on Asians' Preferences for White, Black, Latino, and Same-Race Neighbors: Selected OLS Regression Coefficients

	White Neighbors		
	B	SE	Beta
Immigration-related characteristics			
Japanese (ref)	—	—	—
Chinese	-2.92	2.16	-0.08
Korean	16.68*	6.74	0.43
U.S.-born (ref)	—	—	—
Foreign-born: Five years or less in the U.S.	0.79	4.37	0.02
Foreign-born: six to ten years in the U.S.	8.35**	3.16	0.18
Foreign-born: over ten years in the U.S.	6.62**	2.30	0.18
English proficiency	0.82	0.81	0.06
Racial attitudes			
Social class disadvantage	0.47	0.57	0.03
In-group attachment			
None or low (ref)	—	—	—
Medium	1.40	1.23	0.04
High	-2.78†	1.46	-0.07
Racial stereotyping	-0.15	0.78	-0.01
Social distance	-0.70†	0.38	-0.07
White discrimination	-0.83†	0.45	-0.07
Racial-group threat	—	—	—
Interactions			
Korean × five years or less in the U.S.	-15.56*	7.34	-0.23
Korean × six to ten years in the U.S.	-20.66**	7.59	-0.34
Korean × more than ten years in the U.S.	-19.72**	7.11	-0.39
Chinese × more than ten years in the U.S.	—	—	—
Five years or less in the U.S. × English ability	3.61*	1.47	0.17
Six to ten years in the U.S. × high in-group	—	—	—
Six to ten years in the U.S. × social distance	—	—	—
More than ten years in the U.S. × social distance	—	—	—
Constant	27.51***	4.93	
R-squared		0.22***	

Table 5.5 (Continued)

Black Neighbors			Latino Neighbors			Same-Race Neighbors		
B	SE	Beta	B	SE	Beta	B	SE	Beta
—	—	—	—	—	—	—	—	—
-1.42	1.02	-0.08	-2.31*	1.07	-0.11	2.70	2.15	0.06
-9.44***	2.56	-0.49	-11.86**	4.21	-0.54	6.97*	2.95	0.14
—	—	—	—	—	—	—	—	—
-3.42*	1.54	-0.15	-2.76†	1.49	-0.10	7.91†	4.73	0.14
-3.34*	1.62	-0.14	-6.08***	1.75	-0.23	5.42	3.40	0.09
-4.05**	1.33	-0.22	-3.62**	1.35	-0.17	-4.25	2.92	-0.09
0.38	0.39	0.06	0.73	0.40	0.10	-1.94*	0.87	-0.12
-0.82***	0.23	-0.12	-0.44†	0.25	-0.05	1.21**	0.48	0.05
—	—	—	—	—	—	—	—	—
-1.02†	0.57	-0.05	0.05	0.82	0.00	-0.13	1.51	-0.00
1.09	0.67	0.06	-0.81	0.70	-0.04	3.40*	1.31	0.07
-0.79**	0.29	-0.08	-0.89*	0.39	-0.08	0.53	0.90	0.02
-0.41**	0.14	-0.08	-0.96**	0.31	-0.16	0.36	0.53	0.02
—	—	—	—	—	—	0.70	0.46	0.04
-0.25	0.18	-0.05	-0.08	0.22	-0.01	0.05	0.35	0.00
10.41***	2.81	0.30	11.31*	4.41	0.29	-8.98*	4.18	-0.10
12.87***	2.47	0.42	15.64***	4.37	0.45	-11.10**	4.27	-0.15
9.92***	2.75	0.40	12.02**	4.36	0.42	—	—	—
—	—	—	—	—	—	8.03*	3.10	0.15
—	—	—	—	—	—	-4.16**	1.46	-0.15
-4.25**	1.35	-0.16	—	—	—	—	—	—
—	—	—	1.00*	0.47	0.08	—	—	—
—	—	—	0.91*	0.46	0.11	—	—	—
18.41***	2.54	—	17.58***	2.82	—	34.26***	6.02	—
—	0.20***	—	—	0.15***	—	—	0.31***	—

Source: Author's compilation.

Notes: N = 1,014. Models control for sex, age, education, income, political ideology, home-ownership status, public housing experience, household structure, and the presence of target-group members in actual neighborhoods.

\*\*\* p < .001; \*\* p < .01; \* p < .05; † p < .10



Table 5.6 Impact of National Origin and Nativity Status on Asian Respondents' Preferences for White, Black, Latino and Same-Race Neighbors: Selected Coefficients

	White Neighbors	Black Neighbors	Latino Neighbors	Same-Race Neighbors
<b>Japanese</b>				
Five years or less in the U.S.	0.79	-3.42*	-2.76†	7.91†
Six to ten years in the U.S.	8.35**	-3.34*	-6.08***	5.42
Over ten years in the U.S.	6.62**	-4.05**	-3.62**	-4.25
U.S.-born	(ref.)	(ref.)	(ref.)	(ref.)
<b>Chinese</b>				
Five years or less in the U.S.	-2.13	-4.84*	-5.07†	10.61†
Six to ten years in the U.S.	5.43**	-4.76*	-8.39***	8.12
Over ten years in the U.S.	3.70**	-5.47**	-5.93**	6.48*
U.S.-born	-2.92	-1.42	-2.31*	2.70
<b>Korean</b>				
Five years or less in the U.S.	1.91*	-2.45***	-3.31*	5.90*
Six to ten years in the U.S.	4.37**	0.09***	-2.30***	1.29**
Over ten years in the U.S.	3.58**	-3.57***	-3.46**	2.72
U.S.-born	16.68*	-9.44***	-11.86**	6.97*

Source: Author's compilation.

Notes: N = 1,014. Coefficients are the sum of relevant results from table 5.5. The reference category is U.S.-born Japanese.

\*\*\* p < .001; \*\* p < .01; \* p < .05; † p < .10

Table 6.1 Factors Influencing Neighborhood Proximity to Non-Hispanic Whites: 3SLS Regression Coefficients

	Whites	Blacks	Latinos	Asians
Preference for white neighbors	0.52***	0.82***	0.43***	0.21†
Education				
Less than high school (ref)	—	—	—	—
High school graduate	10.79**	2.09	-0.21	4.39*
Some college	6.86	0.79	1.74	7.30**
BA or BS degree	5.78	2.62	6.53*	10.04***
Graduate or professional degree	15.02***	18.58***	17.00**	5.68
Income				
Less than \$20,000 (ref)	—	—	—	—
\$20,000 to \$39,999	11.39***	1.56	4.34***	4.29*
\$40,000 to \$59,999	16.34***	4.81***	10.34***	12.23***
\$60,000 to \$89,999	16.91***	6.38**	14.69***	16.69***
\$90,000 and over	18.75***	6.79*	10.83*	18.33**
Missing income	-0.78	1.79	-0.87	2.77
Net financial assets				
Negative or none (ref)	—	—	—	—
\$1 to \$5,000	-1.58	0.65	0.67	1.14
\$5,001 to \$10,000	1.59	0.49	1.95	0.25
Over \$10,000	3.16	2.01	4.05	2.27
Missing net financial assets	-5.64*	-0.38	-0.72	-4.30**
Homeowner	2.33	-3.30*	-0.73	6.56***
Married with children	4.14	-2.15	-0.46	1.12
Public housing experience				
Never (ref)	—	—	—	—
In the past	-5.59	-1.02	4.23	6.10
Currently	-7.69	-2.66	-6.04	3.89
Years at residence	-0.06	-0.23***	-0.34***	-0.42***
National origin				
Mexican (ref)	—	—	—	—
Central American	—	—	-3.17*	—
Japanese (ref)	—	—	—	—
Chinese	—	—	—	-4.10
Korean	—	—	—	-3.54
Nativity status				
U.S.-born (ref)	—	—	—	—
Foreign-born: five years or less in the U.S.	—	—	-11.15***	0.79
Foreign-born: six to ten years in the U.S.	—	—	-12.17***	2.19
Foreign-born: over ten years in the U.S.	—	—	-10.23***	2.25
English-language ability	—	—	0.70	-0.24
Constant	5.48	-7.54*	11.89***	14.10***
$\chi^2$	199.17***	149.94***	335.18***	429.21***
Number of cases	704	1,038	908	1,014

Source: Author's compilation.

\*\*\* p < .001; \*\* p < .01; \* p < .05; † p < .10

Table 6.2 Factors Influencing Preference for White Neighbors: 3SLS Regression Coefficients

	Whites	Blacks	Latinos	Asians
<b>Racial Attitudes</b>				
Social class disadvantage	1.12	0.25†	0.12	0.73
In-group attachment (ref = none or low)				
Medium	1.45	1.13*	-0.29	0.70
High	-0.09	-0.89	-0.58	-2.59*
Racial stereotyping	4.05***	-0.52*	-1.05**	0.20
Social distance	1.71**	-0.52***	-0.63***	-0.77**
Racial-group threat	1.65***	—	—	—
White discrimination	—	-0.31†	-0.47*	-0.79*
<b>Immigration-related characteristics</b>				
Mexican (ref)			—	—
Central American			3.73**	—
Japanese (ref)			—	—
Chinese			—	-2.39
Korean			—	17.25*
Time in the U.S. (ref = U.S.-born)			—	—
Foreign-born: five years or less			9.41**	1.55
Foreign-born: six to ten years			9.00***	7.99**
Foreign-born: over ten years			7.38***	5.98*
English-language ability			0.36	0.85
<b>Interactions</b>				
Korean × five years or less in the U.S.			—	-16.26*
Korean × six to ten years in the U.S.			—	-21.13**
Korean × over ten years in the U.S.			—	-19.48**
Five years or less in the U.S. × English ability			2.49*	3.12**
Five years or less in the U.S. × stereotyping			2.78**	—
<b>Potential intergroup contact</b>				
Percentage white in neighborhood	-0.03	0.26**	0.46***	0.21*
Public housing (ref = never)				
In the past	-0.37	0.91	-0.93	-3.84
Currently	-1.70	3.84***	7.09	1.59
<b>Social background characteristics</b>				
Male	2.98*	0.65	-1.23	-2.06
Age (ref = 20 to 29)				
30 to 39	-4.55*	0.35	-0.06	2.10
40 to 49	-4.08	0.79	0.00	3.11
50 to 59	-0.87	1.75	4.90*	-0.58
60 to 69	3.71	2.46*	6.06*	-2.98
70 and over	6.33*	2.90*	5.16	-2.85

Table 6.2 (Continued)

	Whites	Blacks	Latinos	Asians
Education (ref = less than high school)				
High school graduate	0.08	-1.29	0.26	0.59
Some college	3.32	-0.59	3.35	1.77
BA or BS degree	2.58	-1.30	-1.43	1.56
Graduate or professional degree	-5.07	-6.43	2.46	4.06
Homeowner	2.10	2.13*	0.05	1.09
Married with children	-0.13	0.59	1.06	-1.07
Political conservatism	-0.57	0.10	0.84*	0.39
Other controls				
Missing social class disadvantage	8.64*	-3.59	-4.87	1.16
Missing racial stereotyping	-4.46	1.15	0.39	1.00
Missing social distance	12.98*	-5.84†	1.40	-1.42
Missing white discrimination	—	-0.42	-5.67	-7.82**
Non-race-matched	-14.73***	4.53**	1.98	-6.18
Female ballot	2.04	-0.48	-1.73	-4.61***
Male ballot	0.54	0.35	-2.64*	-5.69***
Constant	40.85***	17.87***	7.67†	26.07***
$\chi^2$	231.03***	203.99***	216.43***	264.08***
Number of cases	704	1,038	908	1,014

Source: Author's compilation.

\*\*\* p < .001; \*\* p < .01; \* p < .05; † p < .10

Table 6.3 Factors Influencing Neighborhood Proximity to (Out-Group) Minorities: 3SLS Regression Coefficients

	Whites	Blacks	Latinos	Asians
Preference for (out-group) minority neighbors	0.52***	1.50***	0.92***	0.25**
Education				
Less than high school (ref)	—	—	—	—
High school graduate	-10.51**	-2.48	-2.03	-1.40
Some college	6.68	-2.98	-5.33	-4.33*
BA or BS degree	-5.46	-1.93	-8.90*	-6.99***
Graduate or professional degree	-14.83***	-11.67	3.87	-5.48*
Income				
Less than \$20,000 (ref)	—	—	—	—
\$20,000 to \$39,999	-11.29***	-3.82*	-0.56	-3.97**
\$40,000 to \$59,999	-16.29***	-6.06*	-8.19**	-10.67***
\$60,000 to \$89,999	-16.79***	-6.04*	-8.75*	-14.91***
\$90,000 and over	-18.50***	-9.16*	-2.46	-14.59***
Missing income	0.93	-0.97	3.42	-1.18
Net financial assets				
Negative or none (ref)	—	—	—	—
\$1 to \$5,000	1.63	-0.72	-0.03	1.27
\$5,001 to \$10,000	-1.49	-2.95	-2.50	0.31
Over \$10,000	-3.12	-1.05	-2.15	-1.94
Missing net financial assets	5.61*	3.30*	3.11	2.76*
Homeowner	-2.27	-4.44*	8.71***	0.16
Married with children	-4.31	0.45	1.00	-1.04
Public housing experience				
Never (ref)	—	—	—	—
In the past	5.37	0.07	-4.04	-1.59
Currently	7.84	-8.16**	4.33	10.62***
Years at residence	0.06	0.01	-0.12	0.31***
National origin				
Mexican (ref)	—	—	—	—
Central American	—	—	0.53	—
Japanese (ref)	—	—	—	—
Chinese	—	—	—	0.33
Korean	—	—	—	7.83***
Nativity status				
U.S.-born (ref)	—	—	—	—
Foreign-born: five years or less in the U.S.	—	—	14.90***	-1.34
Foreign-born: six to ten years in the U.S.	—	—	9.44**	-0.40
Foreign-born: over ten years in the U.S.	—	—	8.77***	-1.84
English-language ability	—	—	0.37	0.37
Constant	41.42***	-10.61	-11.66†	33.31***
$\chi^2$	197.27***	99.15***	74.76***	364.76***
Number of cases	704	1,038	908	1,014

Source: Author's compilation.

\*\*\* p < .001; \*\* p < .01; \* p < .05; † p < .10

Table 6.4 Factors Influencing Preference for (Out-Group) Minority Neighbors: 3SLS Regression Coefficients

	Whites	Blacks	Latinos	Asians
<b>Racial attitudes</b>				
Social class disadvantage	-1.13	-0.01	0.26	-1.15**
In-group attachment (ref = none or low)	—	—	—	—
Medium	-1.42	-0.09	1.92+	-0.57
High	0.10	0.39	-1.95+	1.25
Racial stereotyping	-4.03***	-0.87*	0.13	-1.71**
Social distance	-1.70**	-0.13	-0.52*	-0.60+
Racial-group threat	-1.66***	-0.06	-0.24	-0.40
<b>Immigration-related characteristics</b>				
National origin				
Mexican (ref)			—	—
Central American			0.41	—
Japanese (ref)			—	—
Chinese			—	-3.53*
Korean			—	-19.52**
Time in the U.S. (ref = U.S.-born)				
Foreign-born: five years or less			-4.94	-6.40*
Foreign-born: six to ten years			-1.10	-6.30+
Foreign-born: over ten years			0.85	-6.62**
English-language ability			0.65	1.00+
<b>Interactions</b>				
Korean × five years or less in the U.S.			—	19.81**
Korean × six to ten years in the U.S.			—	27.40***
Korean × over ten years in the U.S.			—	18.77**
Six to ten years in the U.S. × high in-group attachment			—	-8.46**
<b>Potential intergroup contact</b>				
Percentage (out-group) minority in neighborhood	-0.03	0.18	-0.05	0.02
Public housing (ref = never)	—	—	—	—
In the past	0.37	-0.42	-3.44	12.46**
Currently	1.65	3.00*	1.73	0.85
<b>Social background characteristics</b>				
Male	-3.01*	0.01	0.71	2.62*
Age (ref = 20 to 29)				
30 to 39	4.53*	0.52	0.43	-1.28
40 to 49	4.06	1.28	-1.27	-2.30
50 to 59	0.91	0.67	0.68	-3.01
60 to 69	-3.66	1.48	-5.00	-5.80**
70 and over	-6.22*	1.56	-8.14*	-9.76***

Table 6.4 (Continued)

	Whites	Blacks	Latinos	Asians
Education (ref = less than high school)	—	—	—	—
High school graduate	-0.06	1.57	-0.15	0.74
Some college	-3.29	1.75	0.94	1.05
BA or BS degree	-2.53	2.34	1.68	3.04
Graduate or professional degree	5.12	5.97	-6.81	0.94
Homeowner	-2.14	1.61	-0.61	-0.52
Married with children	0.16	2.05	-0.08	-1.03
Political conservatism	-0.57	0.02	0.38	-0.66†
Other controls				
Missing social class disadvantage	-8.74*	2.26	-6.67*	-0.40
Missing racial stereotyping	4.51	0.34	-2.39	-0.65
Missing social distance	-12.99*	0.28	1.86	-1.89
Non-race-matched	14.88***	9.38*	10.71**	8.67*
Female ballot	-2.05	0.05	1.20	0.63
Male ballot	-0.56	-0.46	-0.08	0.85
Constant	62.48***	23.34***	28.46***	34.54***
$\chi^2$	232.09***	492.94***	151.73***	261.58***
Number of cases	704	1,038	908	1,014

Source: Author's compilation.

\*\*\*  $p < .001$ ; \*\*  $p < .01$ ; \*  $p < .05$ ; †  $p < .10$

# Appendix |

Table A.1 Racial Attitudes and Neighborhood Racial Composition Preferences, by Respondent Race and Nativity Status: Correlations

Target-Group Race	Whites	Blacks	Native-Born Latinos	Foreign-Born Latinos	Native-Born Asians	Foreign-Born Asians
<b>White Neighbors</b>						
Social class disadvantage	—	0.140***	0.123	-0.006	0.058	0.053
In-group attachment	—	-0.145***	-0.166*	-0.059	-0.031	0.096**
Racial stereotyping	—	-0.079*	-0.172*	-0.048	0.094	0.035
Social distance	—	-0.276***	-0.36***	-0.179***	-0.112	-0.192***
White discrimination	—	-0.216***	-0.173*	-0.091	0.148	0.019
<b>Black neighbors</b>						
Social class disadvantage	-0.051	—	-0.130	0.017	0.174	-0.305***
In-group attachment	0.004	—	0.017	-0.040	-0.001	0.016
Racial stereotyping	-0.360***	—	-0.055	-0.056	-0.134	-0.128***
Social distance	-0.270***	—	-0.216**	-0.147***	-0.264**	-0.054
Racial-group threat (blacks) <sup>a</sup>	-0.213***	—	-0.116	0.035	-0.102	-0.295***
<b>Latino neighbors</b>						
Social class disadvantage	-0.035	0.014	—	—	0.051	-0.223***
In-group attachment	-0.062	0.021	—	—	0.025	-0.092**
Racial stereotyping	-0.248***	-0.057	—	—	-0.118	-0.197***
Social distance	-0.186	-0.043	—	—	-0.192*	-0.024
Racial-group threat (Latinos) <sup>a</sup>	-0.280***	-0.022	—	—	-0.428***	-0.002
<b>Asian neighbors</b>						
Social class disadvantage	-0.103**	0.109***	-0.051	-0.001	—	—

(Table continues on p. 191.)



---

In-group attachment	-0.053	-0.066*	-0.120	-0.015	—	—
Racial stereotyping	-0.261***	-0.078*	0.025	-0.029	—	—
Social distance	-0.202***	-0.263***	-0.154*	-0.124***	—	—
Racial-group threat (Asians) <sup>a</sup>	-0.303***	-0.192***	-0.283*	-0.084	—	—
Same-race neighbors <sup>b</sup>						
Social class disadvantage	0.080*	-0.045	-0.014	-0.050	-0.166	0.120***
In-group attachment	0.049	0.124***	0.192*	0.073*	0.009	-0.034
Racial stereotyping	0.343***	0.090**	0.113	-0.022	0.022	-0.032
Social distance	0.245***	0.236***	0.410***	0.188***	0.198*	0.018
Racial-group threat	0.317***	0.146***	0.161*	0.074*	0.179*	0.126***
White discrimination	—	-0.093**	0.070	0.113**	-0.010	-0.043

---

Source: Author's compilation.

a. Owing to a split ballot, roughly one-third of whites considered blacks (N = 234), Latinos (N = 241), and Asians (N = 228); about half of each nonwhite group considered group competition with each remaining group (512 blacks got the Latino ballot, and 523 got Asians; 96 native-born and 345 foreign-born Latinos got the black ballot, 78 native-born and 389 foreign-born Latinos got Asians; 58 native-born and 447 foreign-born Asians considered blacks, 65 native-born and 443 foreign-born Asians considered Latinos).

b. For same-race neighbors, racial attitudes combine responses for all out-groups (for example, for white respondents, attitudes toward blacks, Latinos, and Asians are combined for perceived SES and stereotype difference measures, social distance, and competitive threat; for nonwhites, these and the second instance of housing discrimination are pooled).

\*\*\* p < .001; \*\* p < .01; \* p < .05

Table A.2 Factors Influencing Whites' Preferences: OLS Regression Coefficients

	Blacks	Latinos	Asians	Race
Constant	25.12***	18.53***	18.67***	28.63***
Social background				
Sex (1 = male)	-1.33	-0.93	-1.38	3.81
Age (ref = 20 to 29)				
30 to 39	1.11	0.30	1.06	-2.81
40 to 49	-1.48	1.40	1.51	-1.91
50 to 59	-1.13	-0.11	-1.12	2.41
60 to 69	-3.10	-1.05	-0.71	5.11
70 and over	-5.24***	-3.63*	-0.55	9.68**
Education (ref = less than high school)				
High school graduate	-2.34	-0.06	2.74	0.33
Some college	-4.54*	-0.33	1.91	3.54
BA or BS degree	-4.48*	-1.92	2.69	4.09
Graduate or professional degree	-2.19	1.57	4.51*	-3.32
Income (ref = less than \$20,000)				
\$20,000 to \$39,999	0.46	2.49*	1.55	-3.48
\$40,000 to \$59,999	-1.66	0.26	-1.18	3.58
\$60,000 to \$89,999	0.24	-0.18	0.30	0.43
\$90,000 and over	1.41	1.63	2.23	-3.89
Homeowner (1 = yes)	-1.38	1.61	-0.05	0.13
Married with children (1 = yes)	0.35	0.61	-1.00	0.07
Political ideology	-0.22	-0.20	-0.29	0.76
Potential intergroup contact				
Past public housing resident	-0.65	0.66	-0.45	0.22
Current public housing resident	1.46	1.89	-0.07	-3.97
Percentage target group in neighborhood	0.14***	0.10***	0.08*	0.04
Racial attitudes				
Social class disadvantage	0.44	-0.14	-0.42	0.35
In-group attachment (ref = none or low)				
Medium	0.17	0.68	-0.89	0.66
High	0.30	-1.19	-0.89	1.66
Racial stereotyping	-1.92***	-1.36***	-2.23**	5.00***
Social distance	-0.75**	-0.69*	-1.15**	1.95**
Racial-group threat	-0.56*	-0.62***	-0.61**	1.83***
Other controls				
Missing income	-2.33*	-0.35	2.90	0.15
Missing social class disadvantage	1.60	-2.46	-2.27	8.51
Missing racial stereotyping	-3.00	1.76	-1.59	-1.03
Missing social distance	-0.50	-3.65	-3.09	8.06
Non-race-matched	0.59	1.27	3.36***	-6.34***
Female ballot	0.76	-0.31	-0.97	0.87
Male ballot	-0.16	0.58	-1.20	0.75
R-squared	0.28***	0.16***	0.16***	0.23***

Source: Author's compilation.

Notes: N = 705.

\*\*\* p < .001; \*\* p < .01; \* p < .05

Table A.3 Factors Influencing Blacks' Preferences: OLS Regression Coefficients

	Whites	Latinos	Asians	Race
Constant	20.37***	19.00***	13.97***	43.91***
Social background				
Sex (1 = male)	-0.19	0.28	-0.34	0.30
Age (ref = 20 to 29)				
30 to 39	0.81	0.32	0.87	-2.40
40 to 49	1.99	-0.25	1.94	-4.14*
50 to 59	2.86	0.17	1.88	-5.29*
60 to 69	2.58	-0.74	2.01	-4.10
70 and over	2.65	1.04	2.20	-7.06*
Education (ref = less than high school)				
High school graduate	-1.67	1.36	0.81	-0.65
Some college	-1.13	0.58	1.79	-1.31
BA or BS degree	-1.68	1.24	2.43*	-2.07
Graduate or professional degree	-3.04	0.56	6.97**	-4.66
Income (ref = less than \$20,000)				
\$20,000 to \$39,999	2.82**	-1.76*	-0.20	-1.03
\$40,000 to \$59,999	1.83	-2.72*	0.99	-0.69
\$60,000 to \$89,999	3.55*	-0.91	0.44	-3.43
\$90,000 and over	3.08	-1.20	0.44	-3.09
Homeowner (1 = yes)	-0.04	-0.05	-0.24	0.54
Married with children (1 = yes)	0.39	1.60	1.45	-3.46*
Political conservatism	0.25	-0.01	0.32	-0.57
Potential intergroup contact				
Past public housing resident	1.11	-0.56	0.07	-0.37
Current public housing resident	3.71**	0.85	0.04	-4.69**
Percentage target group in neighborhood	0.09***	0.05	0.06	0.05
Racial attitudes				
Social class disadvantage	0.33†	-0.09	0.51**	-1.11**
In-group attachment (ref = none or low)				
Medium	1.82**	0.14	-0.00	-1.97*
High	-1.20	-0.60	-0.50	2.47†
Racial stereotyping	-0.72*	-1.06*	-0.53*	2.68***
Social distance	-0.73***	-0.32	-0.54***	1.11**
White discrimination	-0.50*	—	—	0.26
Racial-group threat	—	-0.16	-0.28†	0.45†
Other controls				
Missing income	1.96	0.39	0.10	-1.94
Missing social class disadvantage	-2.08	1.80	-0.95	-2.11
Missing stereotyping	1.41	3.26	-0.58	-1.02
Missing social distance	-5.82	-1.75	0.99	2.66
Missing white discrimination	-4.11	—	—	3.44
Non-race-matched	1.38	1.57	0.96	-4.64
Female ballot	-1.34	-0.86	1.40	0.90
Male ballot	-0.54	0.12	0.21	0.36
R-squared	0.12***	0.05***	0.09***	0.13***

Source: Author's compilation.

Notes: N = 1,038.

\*\*\* p < .001; \*\* p < .01; \* p < .05; † p < .10

Table A.4 Factors Influencing Latinos' Preferences: OLS Regression Coefficients

	Whites	Blacks	Asians	Same-Race
Constant	13.27***	13.15***	10.43***	41.62***
Social background				
Sex (1 = male)	-1.26	1.65	0.13	-0.43
Age (ref = 20 to 29)				
30 to 39	-0.76	0.22	1.42	-1.27
40 to 49	-2.05	1.69	-0.08	-0.59
50 to 59	4.05	2.39	3.43**	-11.03***
60 to 69	4.61	-2.17	-1.21	-2.01
70 and over	2.38	-0.81	-6.15*	3.88
Education (ref = less than high school)				
High school graduate	0.25	0.14	0.99	-0.92
Some college	4.07	-0.59	1.89	-5.59
BA or BS degree	1.59	1.01	1.66	-4.48
Graduate or professional degree	9.08	-5.39	1.29	-7.52
Income (ref = less than \$20,000)				
\$20,000 to \$39,999	1.82	0.61	-0.15	-3.08
\$40,000 to \$59,999	3.61	0.03	-0.11	-5.03*
\$60,000 to \$89,999	-2.93	3.30	1.34	-3.97
\$90,000 and over	4.65	-5.91	-3.44	3.02
Political conservatism	1.11*	-0.05	0.40	-1.52**
Homeowner (1 = yes)	0.13	-1.83*	-0.12	2.71
Married with children (1 = yes)	0.78	-0.71	0.46	-0.54
Potential intergroup contact				
Past public housing resident	-0.09	-0.86	-1.05	2.02
Current public housing resident	6.43	-2.89	2.18	-5.68
Percentage target group in neighborhood	0.21***	0.12***	0.21***	0.10**
Immigration-related characteristics				
Central American	3.53*	0.89	-0.34	-3.74*
Time in the U.S. (ref = U.S.-born)				
Five years or less	6.27*	-0.78	-3.68*	13.97***
Six to ten years	5.33*	-2.65	-0.02	2.46
Over ten years	4.59**	-2.92*	0.44	6.65
English-language ability	0.89†	0.94**	0.10	-0.26
Racial attitudes				
Social class disadvantage	0.18	-0.65*	-0.21	-0.18
In-group attachment (ref = none or low)				
Medium	0.00	0.19	2.35*	-2.79†
High	-0.63	0.36	-0.96	2.63†

Table A.4 (Continued)

	Whites	Blacks	Asians	Same-Race
Racial stereotyping	-1.40**	-0.50	-0.81*	0.65
Social distance	-0.72***	-0.90***	-0.44**	1.17***
White discrimination	-0.66*	—	—	-0.74*
Racial-group threat	—	0.06	-0.32	0.31
Interactions				
Five years or less in the U.S. × English ability	2.82*	—	—	-5.61***
Over ten years in the U.S. × English ability	—	—	—	-2.80**
Five years or less in the U.S. × racial stereotyping	3.21***	—	—	—
Five years or less in the U.S. × social class disadvantage	—	1.55*	—	—
Five years or less in the U.S. × high in-group attachment	—	-5.60**	—	—
Five years or less in the U.S. × social distance	—	0.98*	—	—
Other controls				
Missing income	-3.57*	-0.73	-1.27	6.63*
Missing social class disadvantage	-6.59	-0.04	-2.26	5.80
Missing stereotyping	1.29	-3.82**	-1.46	1.17
Missing social distance	2.83	0.05	-1.01	-4.09
Missing white discrimination	-7.98*	—	—	15.11**
Non-race-matched	-1.16	0.49	1.67	-3.78
Female ballot	-1.29	-1.45	2.07*	0.94
Male ballot	-2.48*	-0.54	0.49	2.60
R-squared	0.19***	0.15***	0.14***	0.23***

Source: Author's compilation.

Notes: N = 908.

\*\*\* p < .001; \*\* p < .01; \* p < .05; † p < .10

Table A.5 Factors Influencing Asians' Preferences: OLS Regression Coefficients

	Whites	Blacks	Latinos	Same-Race
Constant	27.51***	18.41***	17.58***	34.26***
Social background				
Sex (1 = male)	-1.19	1.08†	1.04	-0.37
Age (ref = 20 to 29)				
30 to 39	2.37	-0.89	-0.54	-0.43
40 to 49	3.04	-1.38	-0.77	-0.40
50 to 59	-1.06	-2.13	-0.89	4.20
60 to 69	-2.63	-3.83**	-2.68	9.60***
70 and over	-3.76	-5.14***	-5.15**	14.20***
Education (ref = less than high school)				
High school graduate	1.01	0.44	0.85	-3.00
Some college	2.29	0.58	0.61	-4.37
BA or BS degree	2.19	1.79†	1.34	-6.56**
Graduate or professional degree	3.89	1.41	-0.90	-6.84*
Income (ref = less than \$20,000)				
\$20,000 to \$39,999	0.24	-1.10	-0.79	1.20
\$40,000 to \$59,999	0.73	-0.25	0.01	-2.04
\$60,000 to \$89,999	2.21	-1.04	0.50	-3.99
\$90,000 and over	4.26	0.54	1.30	-7.76*
Political conservatism	0.33	-0.45*	-0.04	0.22
Homeowner (1 = yes)	1.36	-0.51	-0.01	-0.79
Married with children (1 = yes)	-1.41	-0.73	-0.41	2.92*
Potential intergroup contact				
Past public housing resident	-3.29	6.13**	6.46**	-9.62*
Current public housing resident	1.71	-0.62	0.44	0.43
Percentage target group in neighborhood	0.13***	0.01	0.03	0.13**
Immigration-related characteristics				
Chinese	-2.92	-1.42	-2.31*	2.70
Korean	16.67*	-9.44***	-11.86**	6.97*
Time in the U.S. (ref = U.S.-born)				
Five years or less	0.79	-3.42*	-2.58†	7.91†
Six to ten years	8.35**	-3.34†	-6.08***	5.42
Over ten years	6.62**	-4.05***	-3.62**	-4.25
English-language ability	0.82	0.38	0.73	-1.94*
Racial attitudes				
Social class disadvantage	0.47	-0.82***	-0.44†	1.21*
In-group attachment (ref = none or low)				
Medium	1.40	-1.02	0.05	-0.13
High	-2.78†	1.09	-0.81	3.40*

Table A.5 (Continued)

	Whites	Blacks	Latinos	Same-Race
Racial stereotyping	-0.15	-0.79*	-0.89*	0.53
Social distance	-0.70†	-0.41**	-0.96**	0.36
White discrimination	-0.83†	—	—	0.70
Racial-group threat	—	-0.25	-0.08	0.05
Interactions				
Korean × five years or less in the U.S.	-15.56*	10.41**	11.31*	-8.98*
Korean × six to ten years in the U.S.	-20.66**	12.87***	15.64***	-11.10**
Korean × more than ten years in the U.S.	-19.72**	9.92***	12.02**	—
Chinese × more than ten years in the U.S.	—	—	—	8.03*
Five years or less in the U.S. × English ability	3.61*	—	—	-4.16**
Six to ten years in the U.S. × high in-group attachment	—	-4.25**	—	—
Six to ten years in the U.S. × social distance	—	—	1.00*	—
Over ten years in the U.S. × social distance	—	—	0.91*	—
Other controls				
Missing income	-0.99	-0.44	-0.99	2.97
Missing social class disadvantage	0.86	-0.35	-0.24	-2.72
Missing stereotyping	0.93	0.44	-0.28	-0.95
Missing social distance	-0.99	-0.98	-1.43	3.80
Missing white discrimination	-7.89*	—	—	9.10*
Non-race-matched	-9.42**	3.65	3.82	2.17
Female ballot	-4.55**	-0.04	0.71	3.86**
Male ballot	-5.90***	0.59	0.30	5.13***
R-squared	0.22***	0.20***	0.15***	0.31***

Source: Author's compilation.

Notes: N = 1,014.

\*\*\* p < .001; \*\* p < .01; \* p < .05; † p < .10